

Due to varying computer screen settings, this document should not be used for final color selection. Please request actual color selectors from your local Moderco distributor.



DESERT SAND



Porcelain 5521-05



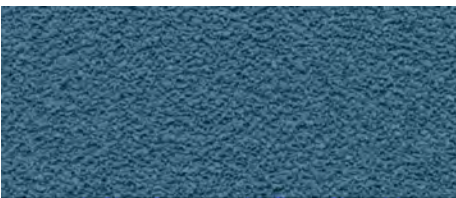
Dionis 5521-93



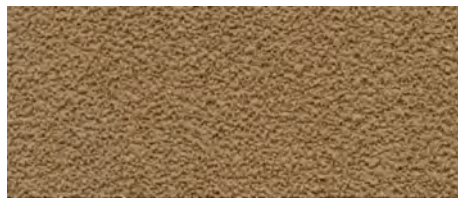
Huntington Beige 5921-45



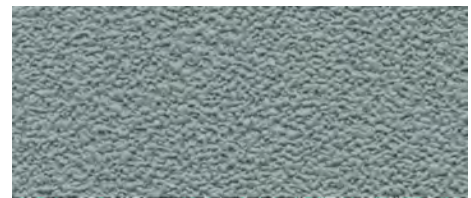
Platinum 5721-96



Washed Denim 5921-79

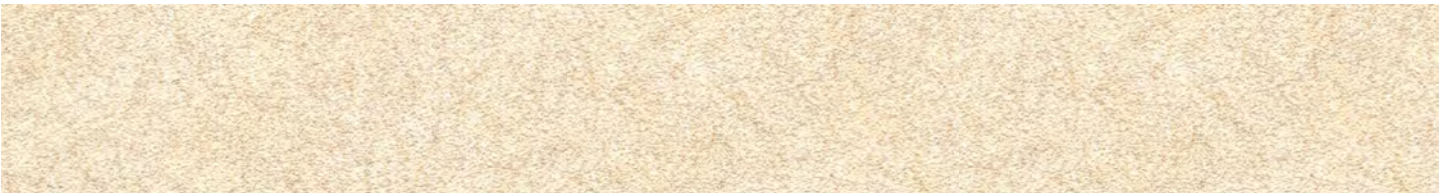


Camel 5521-25



Silver Spring 5921-96

MATRIX



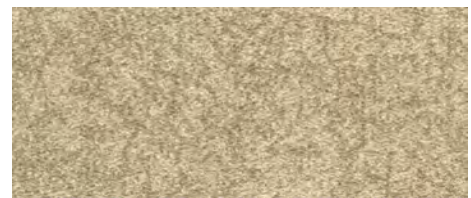
Ivory Metrix M121-10



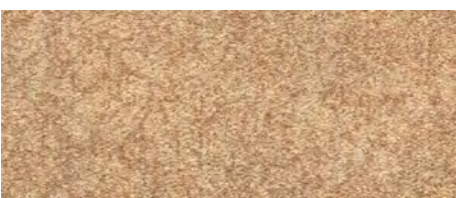
Bone M121-24



Diamond Ice M121-77



Roman Glass M121-53



Amber Gold M121-21



Soft Amazonite M121-86



Golden Malachite M121-82

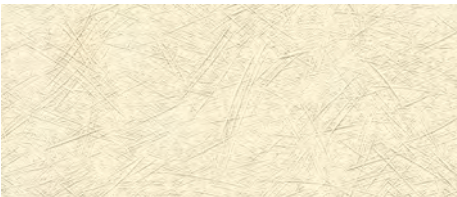
Due to varying computer screen settings, this document should not be used for final color selection. Please request actual color selectors from your local Moderco distributor.



GRASSLAND



Tree Bark G021-28



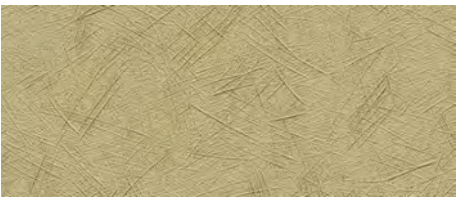
Tumbleweed G021-37



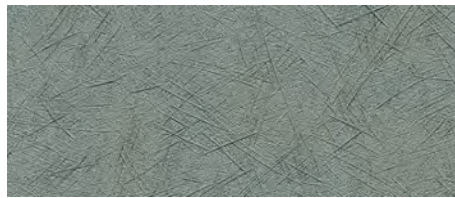
Silver Straw G021-98



Bluff G021-32



Savory G021-84



Thunder G021-90



Desert Bloom G021-62

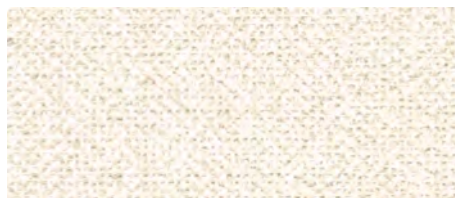
LINDEN



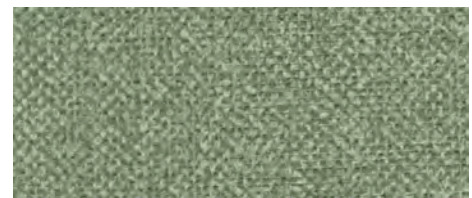
Tatter Sall 4621-31



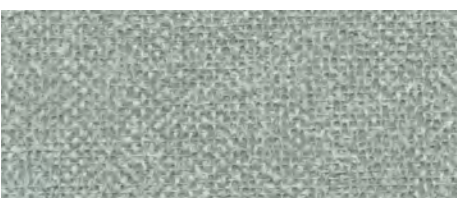
Château 4821-99



Swansea 4621-23



Bartley Green 4621-86



Dover Gray 4821-95



Lemon Drop 4621-05



New Castle 4621-94

Due to varying computer screen settings, this document should not be used for final color selection. Please request actual color selectors from your local Moderco distributor.



VIEWPOINT



Ecru V321-16



Curry V321-37



Rattan V321-52



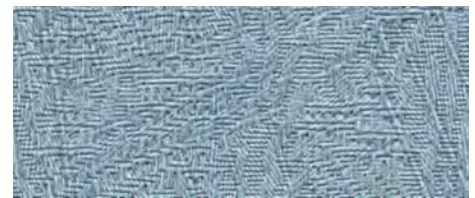
Oyster V321-30



Aloe Vera V321-87

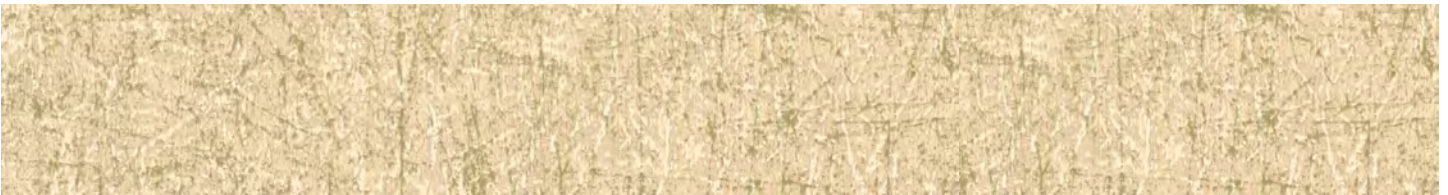


Bronze V321-39

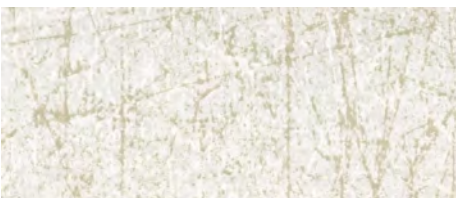


Crystal Bay V321-71

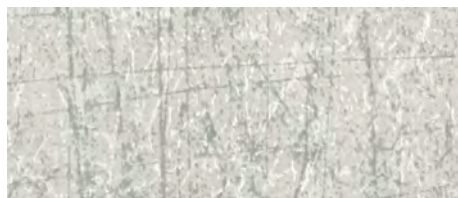
GOSSAMER



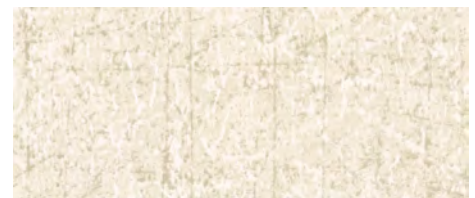
Bliss R821-16



Opal R821-06



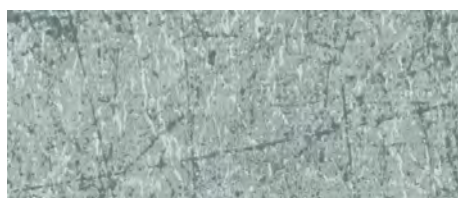
Quartz R821-95



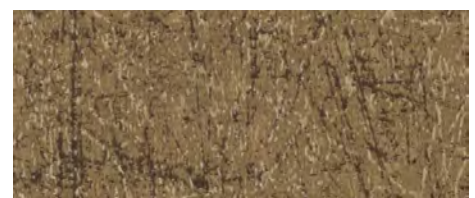
Shell R821-12



Monarch R821-33



Moonstone R821-99



Chicory R821-48



Technical Data

Total weight	21 oz./lin.yard
Backing	Osnaburg
Federal Spec	CCC-W-408A, Type II
CFFA Spec	CFFA-W-101-D, Type II
Fire testing	-NFPA 101, Life Safety Code -NFPA 255 (UL 723, CAN/ULC S102M) Tunnel Test, Class A -NFPA 286 Corner Burn Test, Meets requirements for Flame Spread and Smoke Developed -UL labeled and listed
Flame Spread	10
Smoke Developed	5
VOC	-Passed Test Protocol CA DHS Section 01350 for low VOC Emissions -Test Method CA/DHS/EHLB/R-174

Vinyl wallcoverings contain bactericides and mildew inhibitors to protect the product from microbiological and mildew growth.

Vinyl wallcoverings are manufactured Cadmium- and Mercury-free.

Within commercially acceptable tolerances, some variation of color may occur between dye lots.

Données Techniques

Poids total	21 oz./verge lin.
Endos	Osnaburg
Spécifications Fédérales	CCC-W-408A, Type II
Spécifications CFFA	CFFA-W-101-D, Type II
Test d'inflammabilité	-NFPA 101, "Life Safety Code" -NFPA 255 (UL 723, CAN/ULC S102M) Test en tunnel, Classe A -NFPA 286 "Corner Burn Test", rencontre les normes pour Propagation de la flamme et Émission de fumée -Certification et homologation UL
Propagation de la flamme	10
Émission de fumée	5
COV	-Rencontrent les critères du "Test Protocol CA DHS Section 01350" pour émissions réduites de COV -Méthode CA/DHS/EHLB/R-174

Les revêtements de vinyle contiennent des additifs leur permettant de résister aux bactéries et à la moisissure.

Les revêtements de vinyle sont fabriqués sans Cadmium ni Mercure.

Selon les tolérances commerciales acceptables, on doit s'attendre à certaines variations de couleur d'un lot à l'autre.