

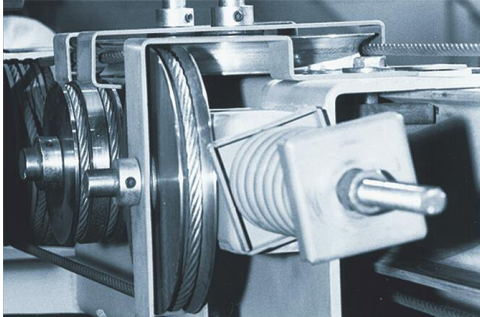


GYMNASIUM DIVIDERS

GYMDOOR

GYMDOOR 801





GYMDOOR 801

Created by **Moderco**, the electrically operated, continuously-hinged **Gymdoor 801** partition is the best way to divide gymnasiums and auditoriums where manual operation is not practical. The Gymdoor 8010 is designed to fit in a pocket with the panels being hidden from view by the pocket door when the partition is retracted. The Gymdoor 8011 is designed to go wall-to-wall with no pocket.

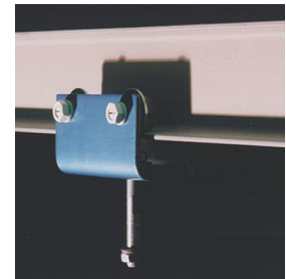
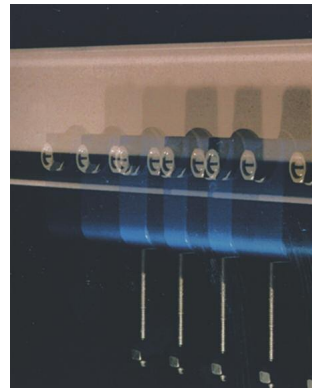
Features

- All welded steel panels, 3" (76 mm) thick, with STC's of 43 and 49
- Heights up to 34'-0" (10360 mm)
- High impact resistant steel skins
- Time-tested cable driven system as used in elevators and cable cars for more reliability
- Additional safety devices are available upon request:
 - Photo Electric Sensors
 - Safety Mats
 - Safety Lead Edge
- **Ten-year warranty**

Durability

The three inches panel is bonded and welded to a 16 gauge all welded steel frame for maximum shock resistance and longer durability.

The track and trolley system is so durable and resistant that **Moderco** offers a ten-year limited warranty.

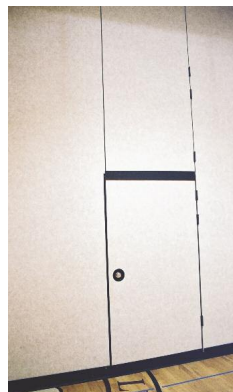


Safety

Motor drive system of 1 HP, 208 V, 3-phase, 60 Hz, equipped with safety switches for the wall operation and pocket doors. Two constant-pressure key switches ensure safe operation of the wall.

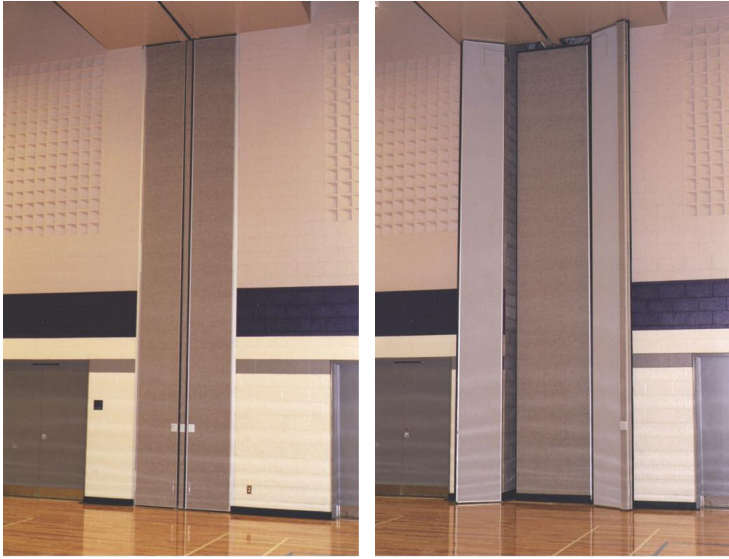
Finishes

Moderco offers two choices of finishes - Standard Vinyl and Optional Carpet - in a variety of colors as selected from our color selectors.



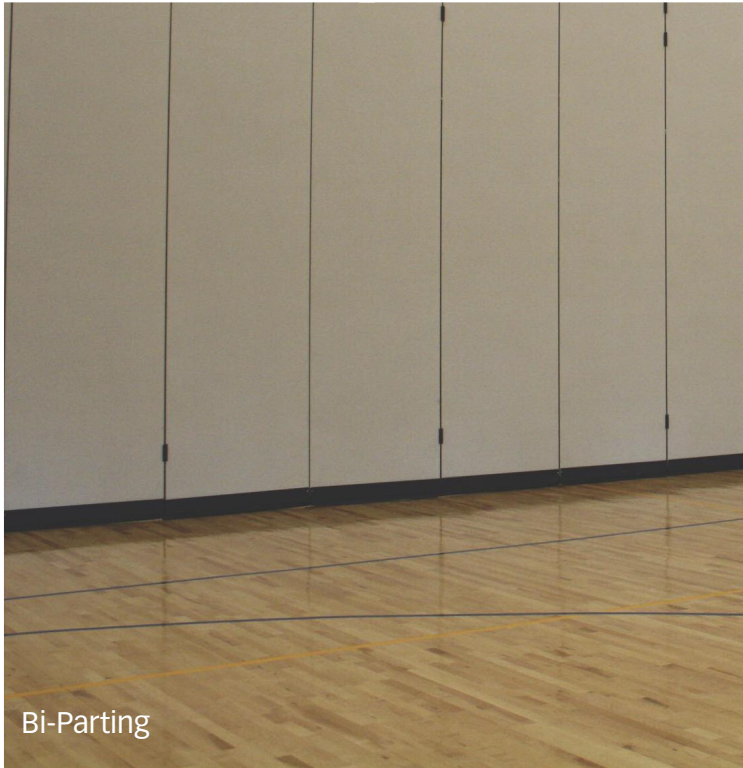
Pass doors

May be installed in one or more panels. Same thickness and finish as the panel allowing movement between the created rooms. No threshold is required.

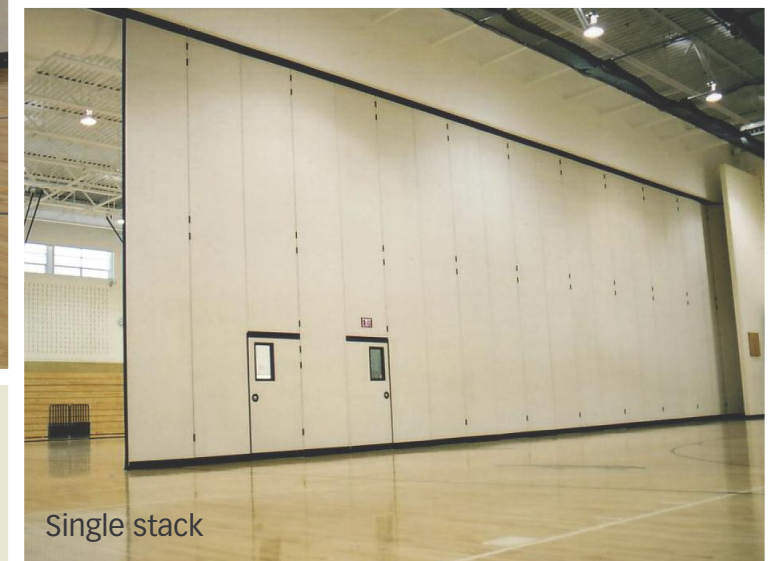


Pocket door

3-piece pocket door is used with the model 8010. The design allows the wall to be extended across the opening with the trail panel concealed within the closed pocket.



Bi-Parting



Single stack

Configurations

Both the Gymdoor 8010 and 8011 are available as a single stack or bi-parting configuration.

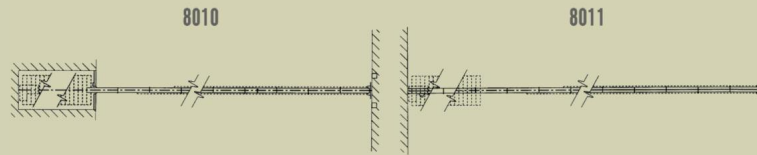
GYMDOOR 801

GYMDOOR 801 PRODUCT GUIDE

MODEL	STACK	CONFIGURATION	OPERATION	STC RATING	WEIGHT Lbs/sq. ft. (Kg/sq.m)	MAX. HEIGHT	MAX. WIDTH
8010	Center	Single stack	Electric	43 / 49	4.1 to 5.1 (20 to 25)	34'-0" (10360 mm)	110'-0" (33500 mm)
8010	Center	Bi-parting	Electric	43 / 49	4.1 to 5.1 (20 to 25)	34'-0" (10360 mm)	220'-0" (67000 mm)
8011	Center	Single stack	Electric	43 / 49	4.1 to 5.1 (20 to 25)	34'-0" (10360 mm)	110'-0" (33500 mm)
8011	Center	Bi-parting	Electric	43 / 49	4.1 to 5.1 (20 to 25)	34'-0" (10360 mm)	220'-0" (67000 mm)

(PRODUCT GUIDE CONTINUED)

MODEL	POCKET DOOR	VERTICAL EDGE	THICKNESS	FACE FINISH	
				VINYL	CARPET
8010	Required	Trimless	3" (76 mm)	Std	Optional
8010	Required	Trimless	3" (76 mm)	Std	Optional
8011	Optional	Trimless	3" (76 mm)	Std	Optional
8011	Optional	Trimless	3" (76 mm)	Std	Optional



■ MATERIALS

A. Product to be top supported Gymdoor 801 Continuously Hinged, Electrically Operated panels as manufactured by Moderco Inc.

1. Panels shall be nominally 3" [76 mm] thick, in manufacturer's standard equal widths up to 48 1/2" [1230 mm], and continuously hinged, electrically operated.
2. Panel faces shall be of minimum 18 ga. galvanized steel sheets welded to a 16 ga. steel frame with appropriate substrates to meet the STC requirement.
3. Interlocking vertical seals between the panels shall consist of tongue and groove vinyl astragals creating an acoustical interlock between panels.
4. Horizontal top seals shall be continuous-contact sweeps. Horizontal bottom seals shall be adjustable seals with fixed sweeps.
5. The panel hinges shall be steel butt-type hinges. The number and spacing of the hinges shall be as required by the manufacturer for the height & weight door specified.

B. Weight of the panels shall not exceed 5.1 lbs/sq.ft [25 kg/sq.m] based on Options selected.

C. Suspension system:

1. Track shall be a 5" [127 mm] steel beam weighing 10 lbs/ft [15kg/m]. Track shall include support brackets and minimum 5/8" [16 mm] diameter rods, spaced to manufacturer's standards
 - a. Every other panel shall be supported by one 4-wheeled carrier. Wheels to be sealed steel ball bearings. Carrier design shall ensure that all wheels remain in contact with the track during normal movement of the panels
2. Drive System:
 - a. The drive unit (located at the storage end of the unit) shall be equipped with a C.S.A. (UL) approved 1 HP, 208 V, 3-phase, 60 Hz motor.
 - b. The drive unit shall be equipped with an endless 3/16" [5 mm] aircraft type cable and limit switches.
 - c. Operation of the partition shall require the use of two (2) simultaneously operated key switches positioned on opposite sides of the partition with a clear unobstructed view during operation of the partition.
 - d. The travel limits of the partition shall be controlled by limit switches positioned on the track system, thereby ensuring full travel before shut off.

D. Finishes

1. Face finish shall be (select one):

a. Reinforced vinyl wallcovering with woven backing, weighing 20 oz. or more per lineal yard [465 g/m]. Color shall be selected from manufacturer's standard color selector.

b. Vertical rib carpet wallcovering with acrylic backing (NRC 0.20). Color shall be selected from manufacturer's standard color selector.

Optional:

(1) C.O.M. / Customer's Own Material; Customer supplied & factory applied (requires factory approval for manufacturing compatibility)

(2) C.S.M. / Customer's Specified Material; Factory supplied & factory applied (requires factory approval for manufacturing compatibility)

E. Accessories/Options

1. Pass Door: ADA-compliant, located as indicated on shop drawings. The door shall be of the same construction and thickness as other panels.
2. Pocket door (required on model 8010, optional on model 8011).
3. Optional safety items:
 - a. Photo-electric sensors (prevents operation if someone is in the area of the partition)
 - b. Safety mats in pocket area (prevents operation if someone or something is in the pocket)
 - c. Safety lead edge (stops partition if it strikes an object)

■ OPERATION

- A. Panels shall be electrically operated, top supported, continuously hinged.
- B. Continuous contact top and adjustable bottom seals.

■ ACOUSTICAL PERFORMANCE

A. Acoustical performance shall have been tested at an NIST-accredited, independent laboratory in accordance with ASTM E90. Standard panel construction shall have obtained an STC rating of (select one) 43 or 49

1. Copies of the written test report are to be made available upon request. Tests must have been conducted at a laboratory available for verification of results.



For additional information:
www.moderco.com
info@moderco.com

Moderco Inc.
115 de Lauzon,
Boucherville,
(Québec) J4B1E7

Phone: 1-800-363-3150
Fax: 1-800-231-4965



All information contained in this brochure is subject to change without notice

Printed on recycled paper