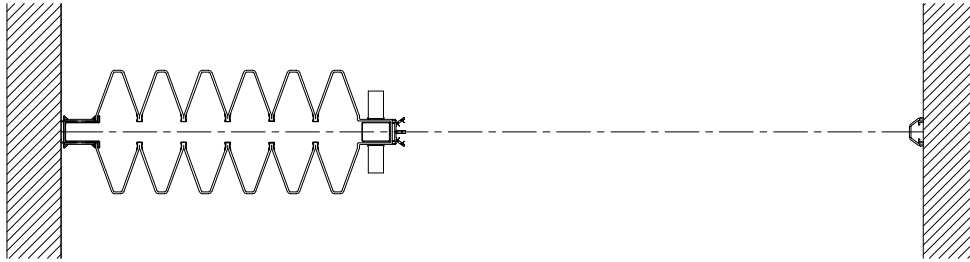




**MODERCO**

Unifold Series

## Technical Data Sheet Unifold



### Features & Options

#### Standards Features

##### Unifold 1500

- Manually-operated accordion door.
- Internal frame made of riveted 14 ga steel pantographs.
- 5-ply cardboard covers attached to pantographs.
- #15 clear anodized 6063-T6 alloy aluminum track.
- Trolleys with 4 nylon wheels mounted to steel ball-bearings on rolling posts.
- Trolleys with 2 nylon wheels mounted to steel ball-bearings on intermediate supports.
- Vinyl wallcovering.

##### Unifold 3100 / 3500

- Manually-operated accordion door.
- STC 31 or 35.
- Internal frame made of riveted 14 ga steel pantographs.
- 5-ply cardboard covers attached to pantographs.
- (Unifold 3500) Fiber glass insulation laminated inside covers.

- Top and bottom sweep seals.
- #40 clear anodized 6063-T6 alloy aluminum track.
- Clear anodized 6063-T5 alloy aluminum ceiling guards.
- Trolleys with 4 nylon wheels mounted to steel ball-bearings on rolling posts.
- Trolleys with 2 nylon wheels mounted to steel ball-bearings on intermediate supports.
- Vinyl wallcovering.

##### Unifold 4000 / 4400

- Manually-operated accordion door.
- STC 40 or 44.
- Internal frame made of riveted 14 ga steel pantographs.
- 5-ply cardboard covers with steel liners attached to pantographs.
- (Unifold 4400) Fiber glass insulation laminated inside covers.
- Top and bottom sweep seals.
- #40 clear anodized 6063-T6 alloy aluminum track.

**Unifold 4000 / 4400 (cont'd)**

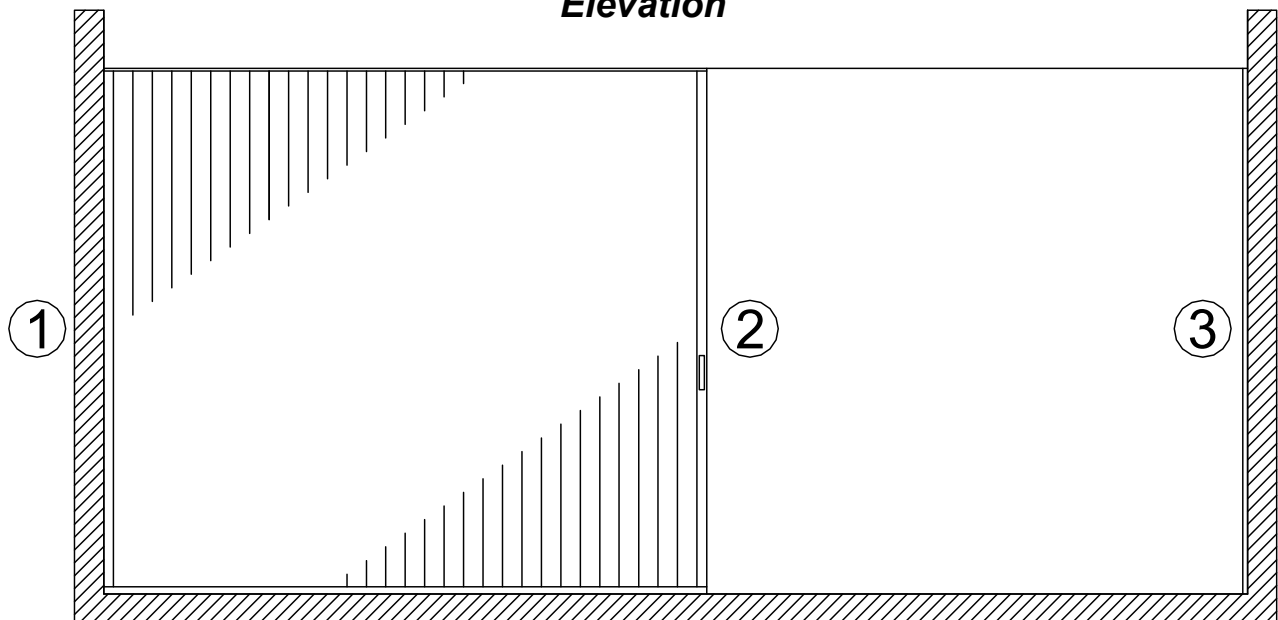
- Clear anodized 6063-T5 alloy aluminum ceiling guards.
- Trolleys with 4 nylon wheels mounted to steel ball-bearings on rolling posts.
- Trolleys with 2 nylon wheels mounted to steel ball-bearings on intermediate supports.
- Vinyl wallcovering.

**Options and Accessories :**

- Painted track.
- Fabric or carpet wallcoverings.
- Wallcovering supplied by others (approval required).
- Rolling trail post.
- Rolling trail post with sliding panel.

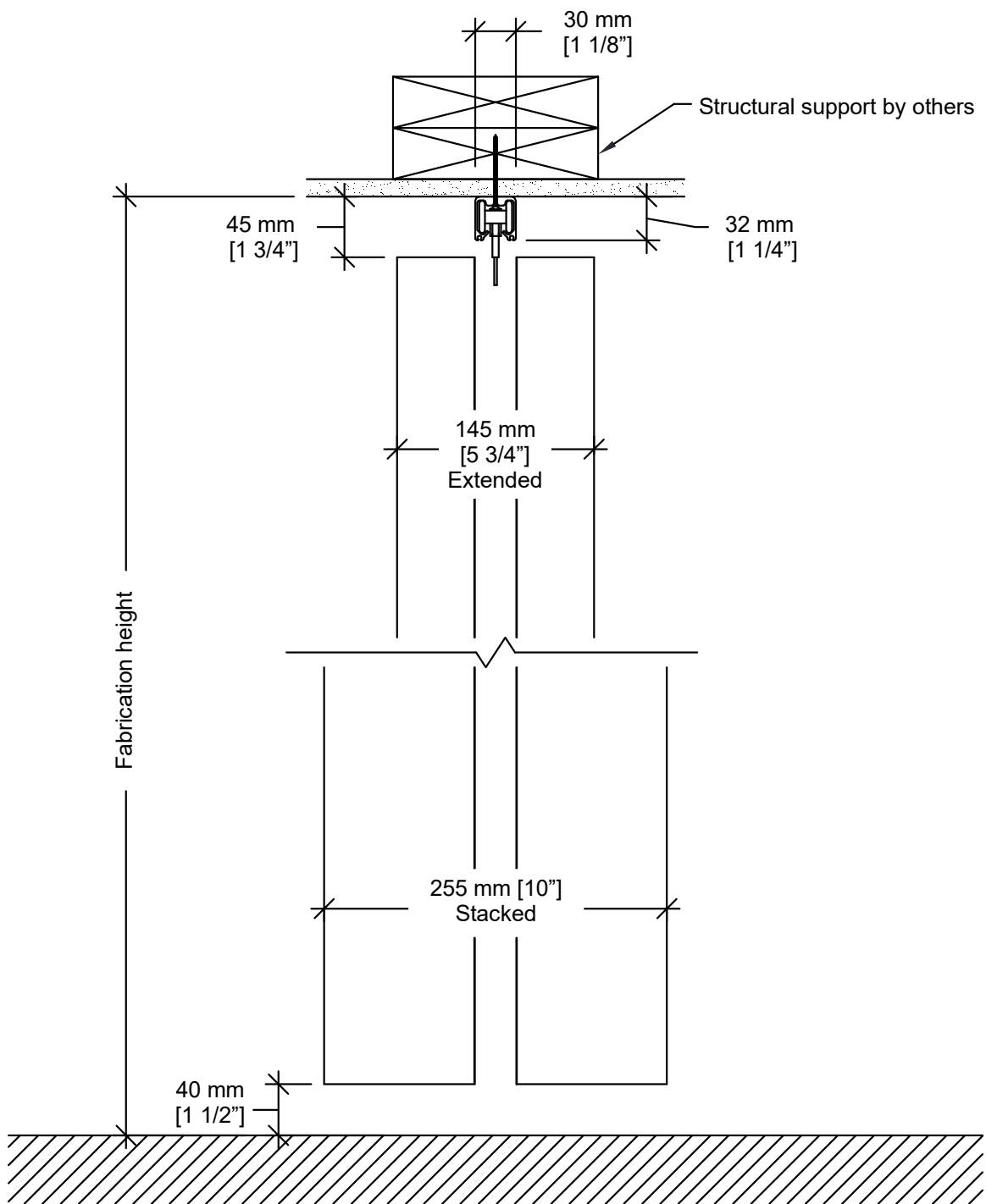
- Paired doors.
- Curved track.
- Curved track with glide switch.
- "L", "T", or "X" lead post.
- "T" or "X" free rolling post.
- Lock :
  - Keyed cylindre one side
  - Keyed cylindres two sides
  - Thumbturn one side
  - Keyed cylindre one side, thumbturn other side
- (Unifold 1500) #40 track and ceiling guards.

**Elevation**



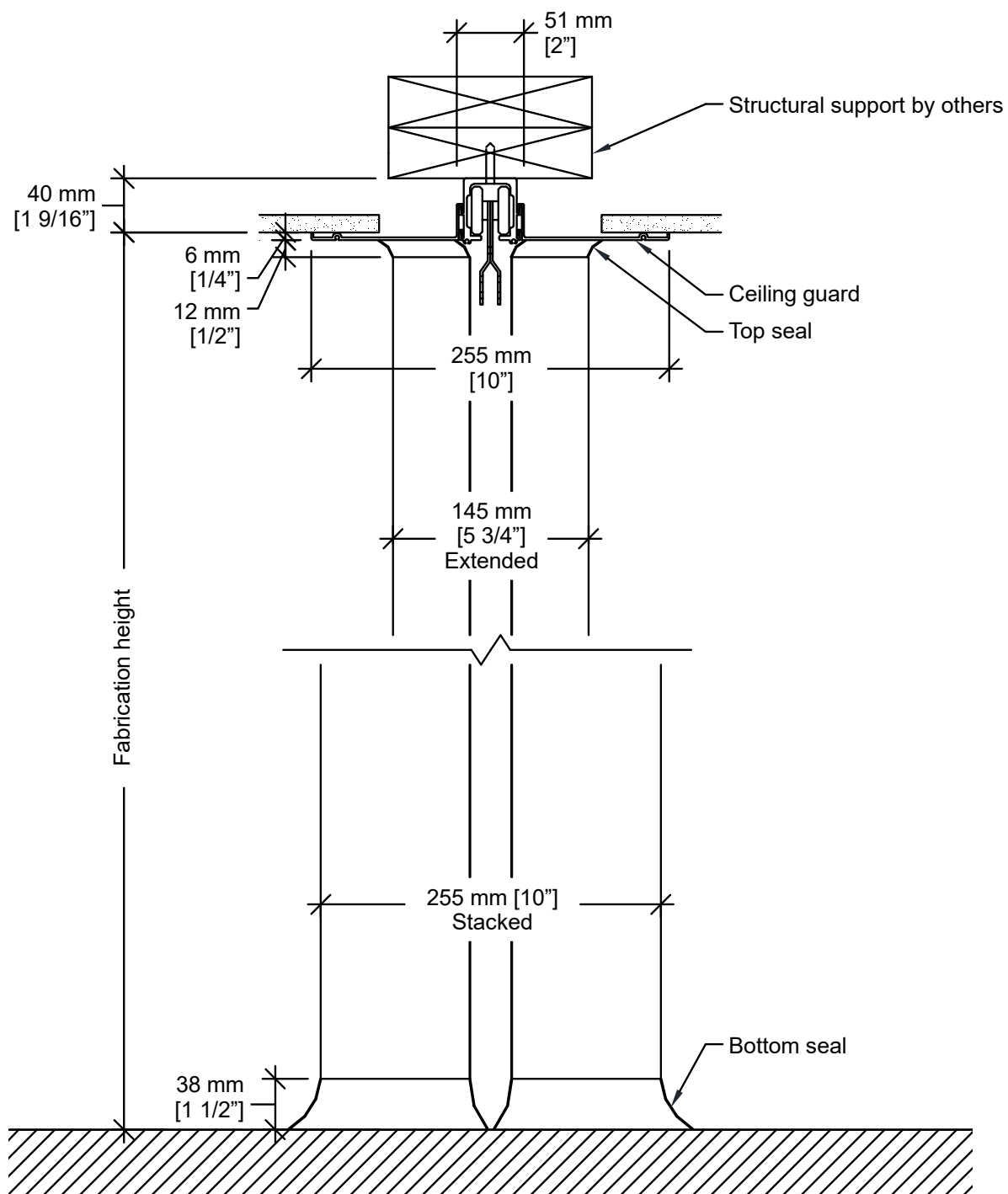
- 1- Fixed post
- 2- Lead post
- 3- Wall jamb

### Vertical Sections



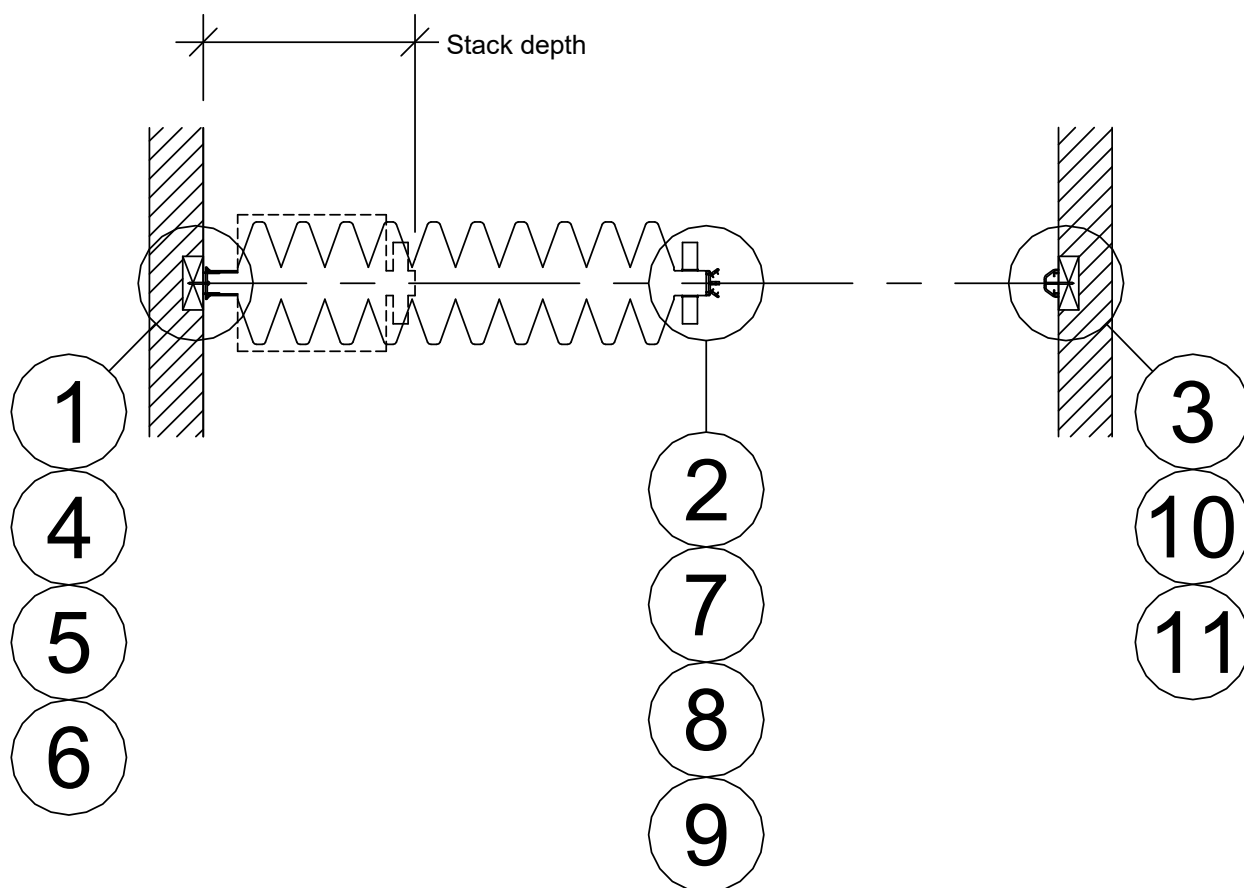
**Unifold 1500**

**Vertical Sections (cont'd)**



**Unifold 3100 / 3500 / 4000 / 4400**

**Plan View**



Stack depth formula :

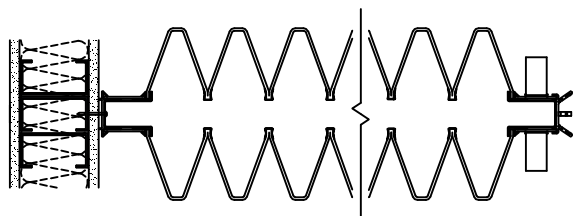
125 mm per meter of opening + 125 mm + 65 mm per field joint <sup>1</sup>  
 [1 1/2" per foot of opening + 5" + 2 1/2" per field joint] <sup>1</sup>

Pocket depth should be 152 mm [6"] greater than stack depth.

<sup>1</sup> A field joint is used if a section of door would exceed a length of 6100 mm [20'-0"] or a weight of 225 kg [500 lbs].

### Horizontal Sections

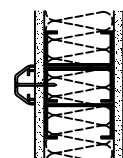
Solid blocking  
by others



1 Fixed post

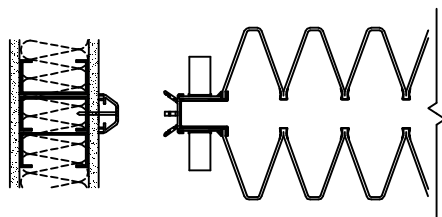
2 Lead post

Solid blocking  
by others

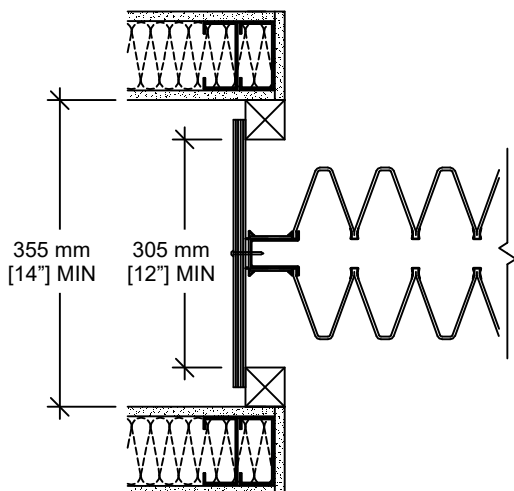


3 Wall jamb

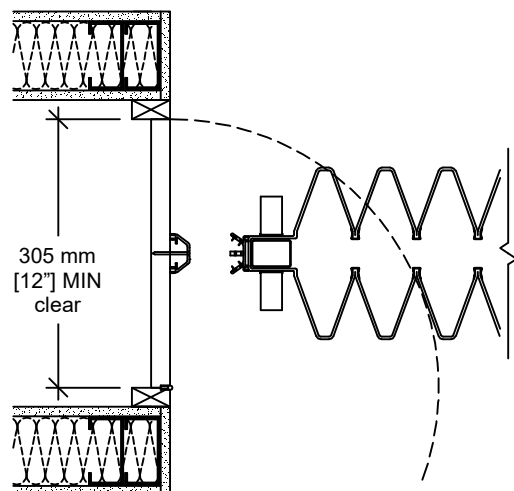
Solid blocking  
by others



4 Rolling post  
(optional)

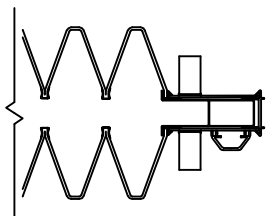


5 Sliding panel (optional)  
Stops by others

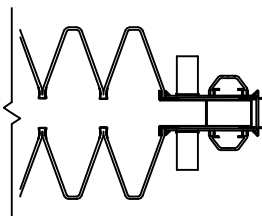


6 Pocket door (by others) and  
rolling post (optional)

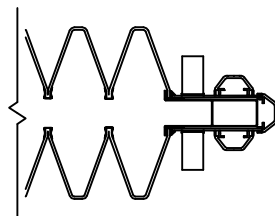
**Horizontal Sections (cont'd)**



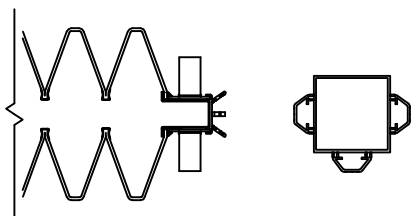
**7** "L" post (optional)



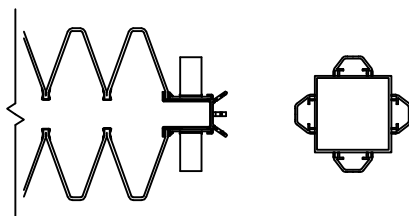
**8** "T" post (optional)



**9** "X" post (optional)

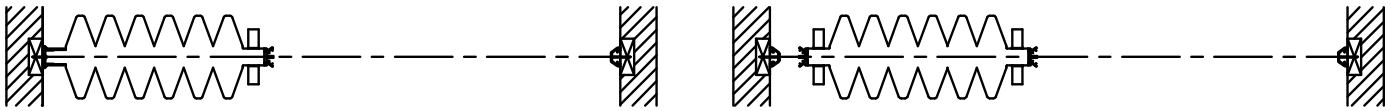


**10** Free "T" rolling post (optional)



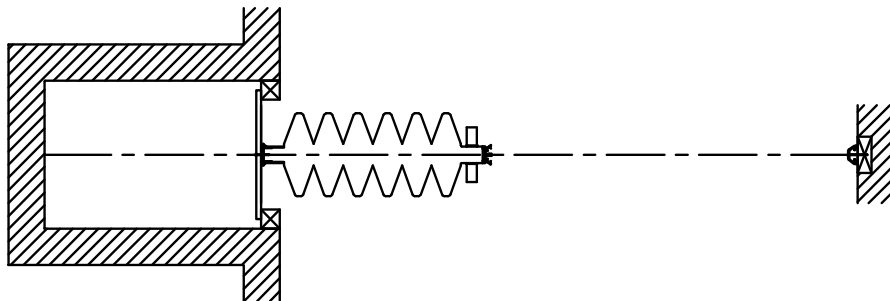
**11** Free "X" rolling post (optional)

**Typical Layouts**

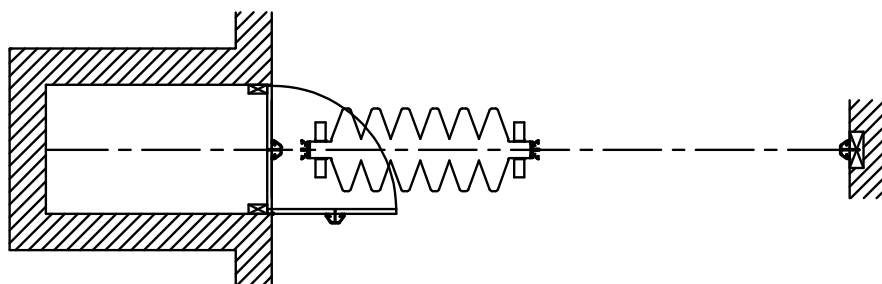


**Single door**

**Single door with rolling post**



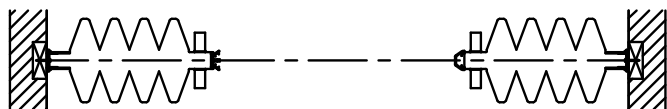
**Single door with sliding panel**



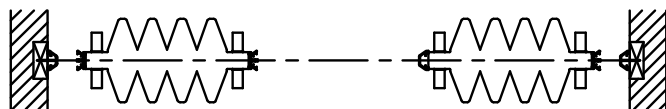
**Single door with rolling post, pocket door by others**



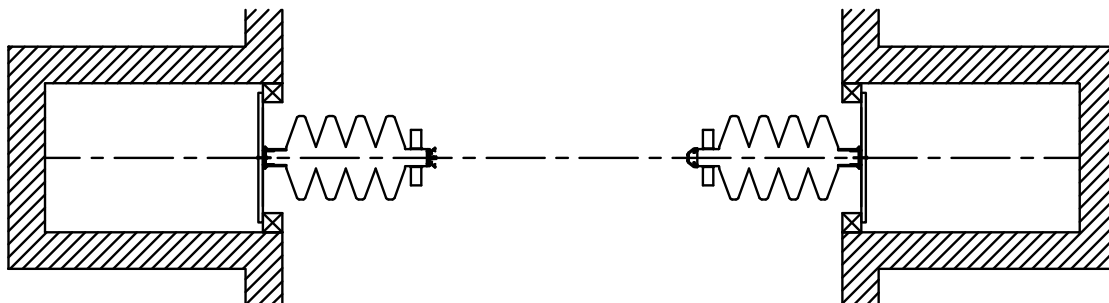
**Typical Layouts (cont'd)**



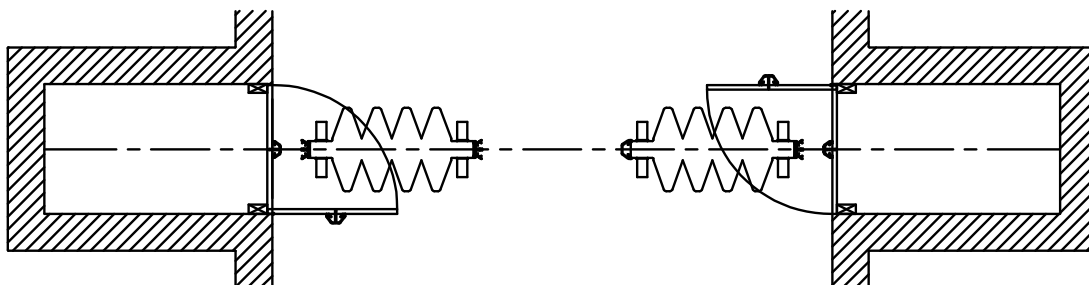
**Pair**



**Pair with rolling posts**

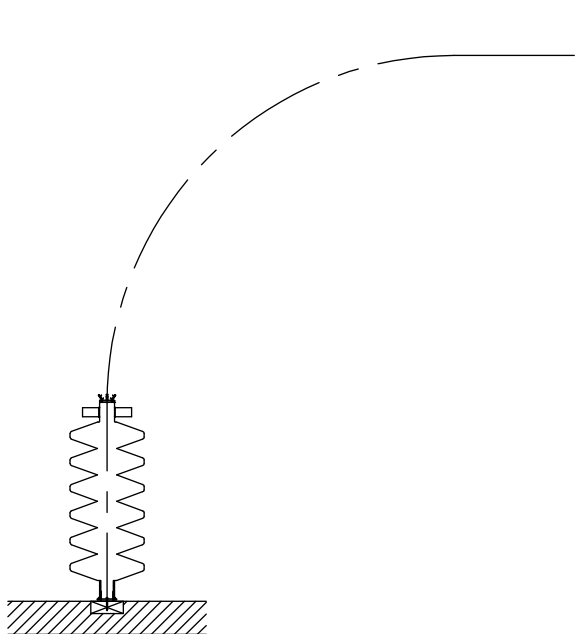


**Pair with sliding panels**

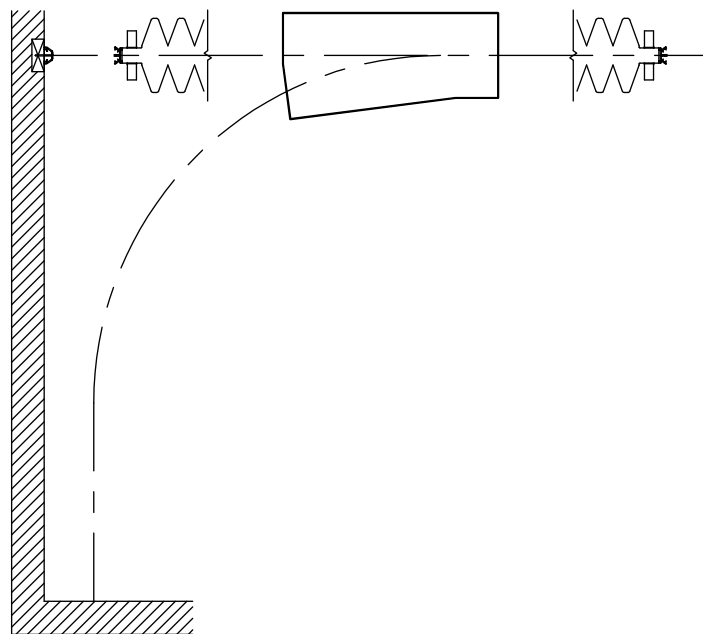


**Pair with rolling posts, pocket doors by others**

**Typical Layouts (cont'd)**



**Curved track  
(#40 track required for Unifold 1500)**



**Curved track and glide switch  
(#40 track required for Unifold 1500)**