



STANDARD VINYL WALLCOVERINGS

This document must not be used for final color selection. Please request a color selector from your local Moderco distributor.



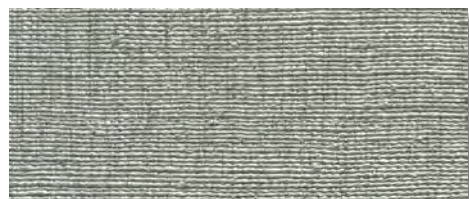
## ORLEANS



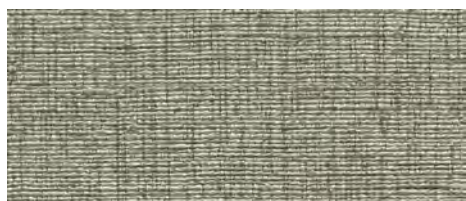
Beignet R921-01



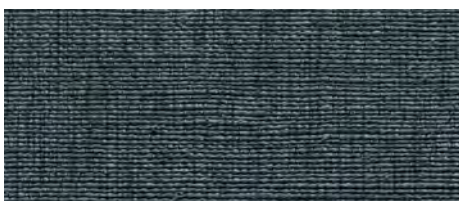
Damask R921-21



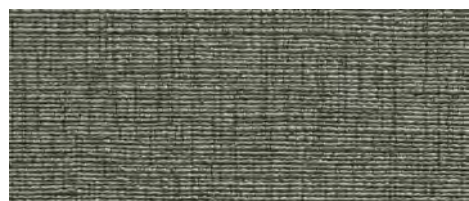
Fine Silver R921-90



Counting Glass R921-78



Ring for the Butler R921-99



Checkers & Chess R921-98



Fleur de Lis R921-07



Inscription R921-03



French Quarter R921-13



Creole R921-08



Joie de Vivre R921-05



Trousseaux R921-71

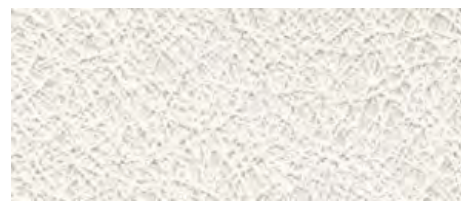
This document must not be used for final color selection. Please request a color selector from your local Moderco distributor.



**DESTINY**



Enchanted 2D21-26



Illusion 2D21-12



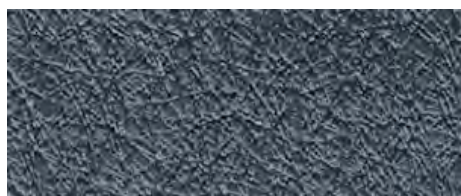
Seashell 2D21-40



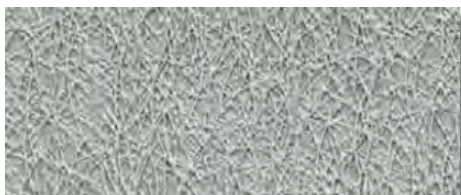
Fawn 2D21-55



Dark Ash 2D21-99



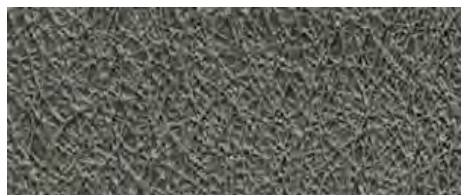
Fascination 2D21-77



Aquatic 2D21-83



Shale 2D21-94



Mineral 2D21-96



Landscape 2D21-44



Mottled 2D21-18



Basketry 2D21-62

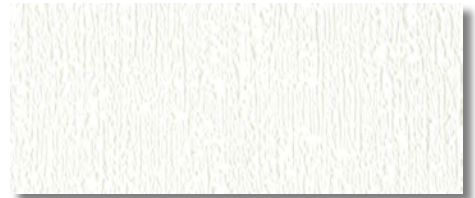
This document must not be used for final color selection. Please request a color selector from your local Moderco distributor.



**SERICIN**



Incognito SN21-01



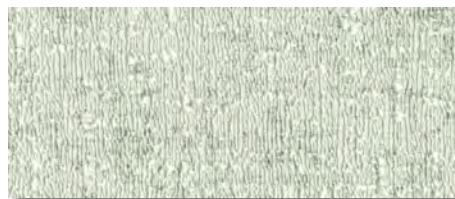
Obscure SN21-02



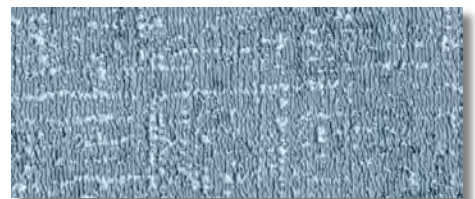
Vernon Court SN21-03



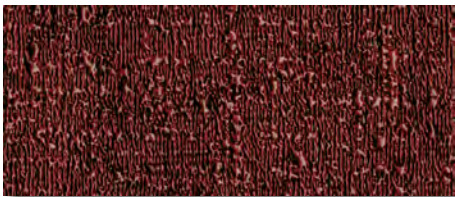
Opulent SN21-05



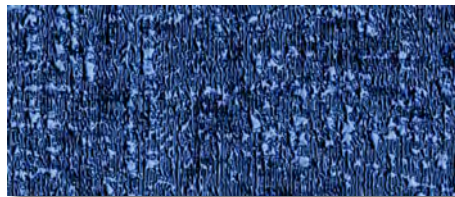
The Elms SN21-06



The Breakers SN21-07



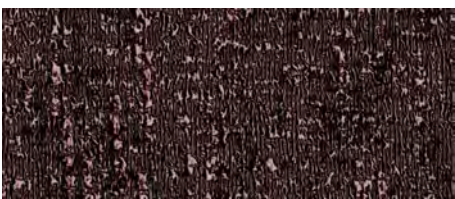
Decadence SN21-08



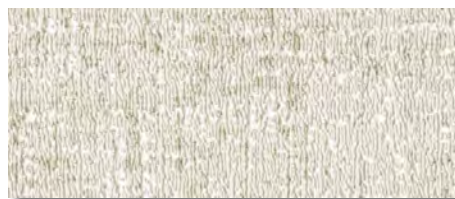
Newport SN21-11



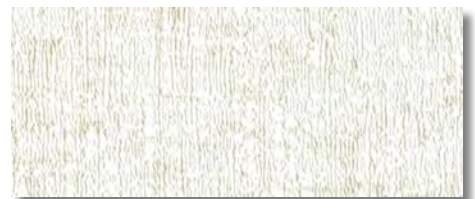
Defiant SN21-12



Masquerade SN21-13



Rosecliff SN21-14



Marble House SN21-15

This document must not be used for final color selection. Please request a color selector from your local Moderco distributor.



## DESERT SAND



Dionis 5521-93



Silk 5921-27



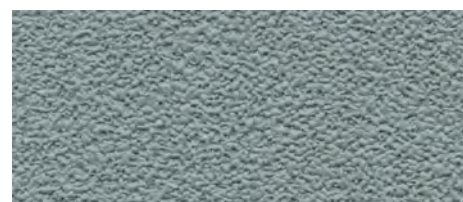
Platinum 5721-96



Quarry 5621-19



Gray Angora 5721-93



Silver Spring 5921-96

## KIMONO II



Brocade K722-06



Alabaster K722-03



Desert K722-08



Dune K722-19



Stone K722-16



China Silk K722-28



### Technical Data

Total weight all other patterns	20 oz./lin.yard
Backing	Osnaburg
Federal Spec	CCC-W-408A, Type II
CFFA Spec	CFFA-W-101-D, Type II
Fire testing	-NFPA 101, Life Safety Code -NFPA 255 (UL 723, CAN/ULC S102M) Tunnel Test, Class A -NFPA 286 Corner Burn Test, Meets requirements for Flame Spread and Smoke Developed -UL labeled and listed
Flame Spread	15
Smoke Developed	30
VOC	-Passed Test Protocol CA DHS Section 01350 for low VOC Emissions -Test Method CA/DHS/EHLB/R-174

Vinyl wallcoverings contain bactericides and mildew inhibitors to protect the product from microbiological and mildew growth.

Vinyl wallcoverings are manufactured Cadmium- and Mercury-free.

Within commercially acceptable tolerances, some variation of color may occur between dye lots.