



VINYL WALLCOVERINGS
RECOUVREMENTS DE VINYLE

Due to varying computer screen settings, this document should not be used for final color selection. Please request physical color selectors from your local Moderco distributor.



DESERT SAND



Silk 5921-27



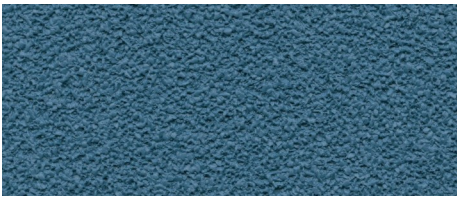
Dionis 5521-93



Gray Angora 5721-93



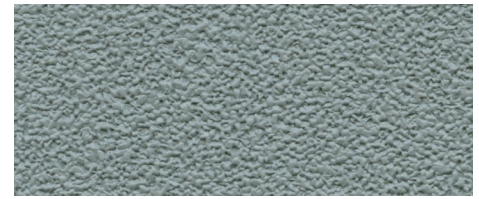
Platinum 5721-96



Washed Denim 5921-79



Quarry 5621-19



Silver Spring 5921-96

MATRIX



Ivory Metrix M121-10



Bone M121-24



Diamond Ice M121-77



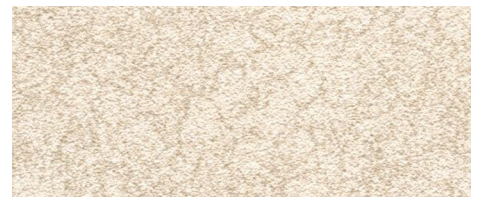
Roman Glass M121-53



Amber Gold M121-21



Soft Amazonite M121-86

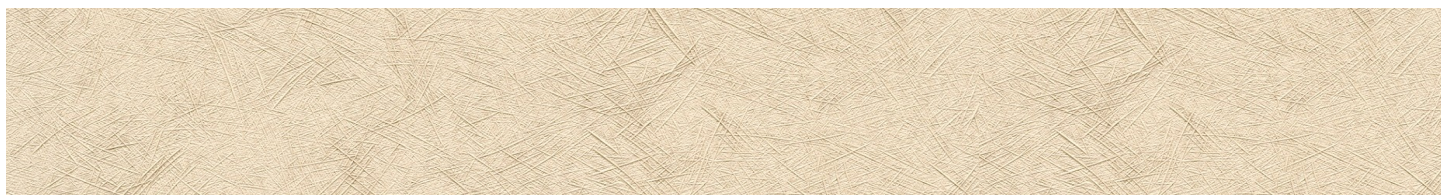


Lapis Nevada M121-19

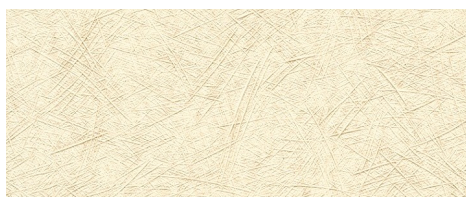
Due to varying computer screen settings, this document should not be used for final color selection. Please request physical color selectors from your local Moderco distributor.



GRASSLAND



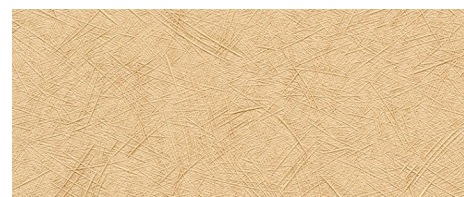
Tree Bark G021-28



Tumbleweed G021-37



Silver Straw G021-98



Bluff G021-32



Savory G021-84

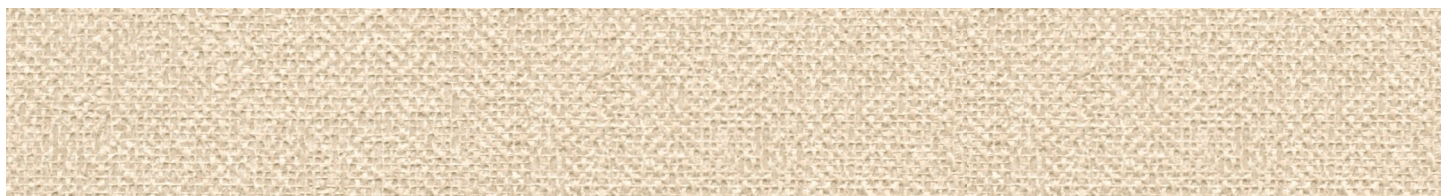


Thunder G021-90

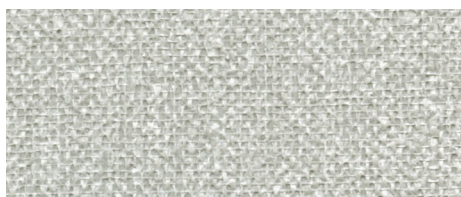


Glacier G021-02

LINDEN



Tatter Sall 4621-31



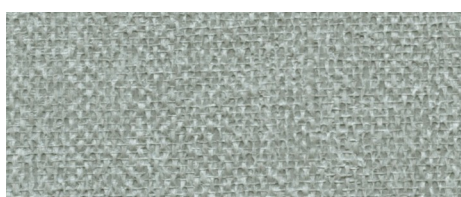
Château 4821-99



Swansea 4621-23



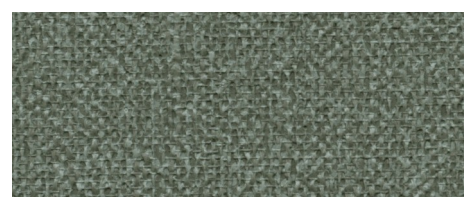
Foggy Day 4621-37



Dover Gray 4821-95



Lemon Drop 4621-05



New Castle 4621-94

Due to varying computer screen settings, this document should not be used for final color selection. Please request physical color selectors from your local Moderco distributor.



VIEWPOINT



Ecru V321-16



Driftwood V321-33



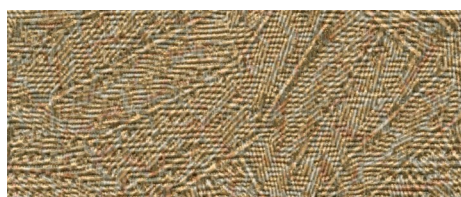
Rattan V321-52



Oyster V321-30



Aloe Vera V321-87



Bronze V321-39



Crystal Bay V321-71

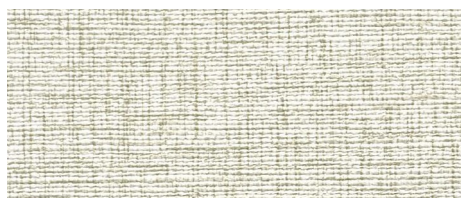
ORLEANS



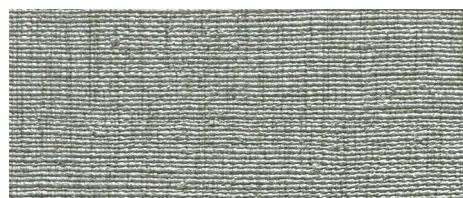
Beignet R921-01



Damask R921-21



Inscription R921-03



Fine Silver R921-90



Counting Glass R921-78



Ring for the Butler R921-99



Checkers & Chess R921-98



Technical Data

Total weight	21 oz./lin.yard
Backing	Osnaburg
Federal Spec	CCC-W-408A, Type II
CFFA Spec	CFFA-W-101-D, Type II
Fire testing	-NFPA 101, Life Safety Code -NFPA 255 (UL 723, CAN/ULC S102M) Tunnel Test, Class A -NFPA 286 Corner Burn Test, Meets requirements for Flame Spread and Smoke Developed -UL labeled and listed
Flame Spread	10
Smoke Developed	5
VOC	-Passed Test Protocol CA DHS Section 01350 for low VOC Emissions -Test Method CA/DHS/EHLB/R-174

Vinyl wallcoverings contain bactericides and mildew inhibitors to protect the product from microbiological and mildew growth.

Vinyl wallcoverings are manufactured Cadmium- and Mercury-free.

Within commercially acceptable tolerances, some variation of color may occur between dye lots.

Données Techniques

Poids total	21 oz./verge lin.
Endos	Osnaburg
Spécifications Fédérales	CCC-W-408A, Type II
Spécifications CFFA	CFFA-W-101-D, Type II
Test d'inflammabilité	-NFPA 101, "Life Safety Code" -NFPA 255 (UL 723, CAN/ULC S102M) Test en tunnel, Classe A -NFPA 286 "Corner Burn Test", rencontre les normes pour Propagation de la flamme et Émission de fumée -Certification et homologation UL
Propagation de la flamme	10
Émission de fumée	5
COV	-Rencontrent les critères du "Test Protocol CA DHS Section 01350" pour émissions réduites de COV -Méthode CA/DHS/EHLB/R-174

Les revêtements de vinyle contiennent des additifs leur permettant de résister aux bactéries et à la moisissure.

Les revêtements de vinyle sont fabriqués sans Cadmium ni Mercure.

Selon les tolérances commerciales acceptables, on doit s'attendre à certaines variations de couleur d'un lot à l'autre.