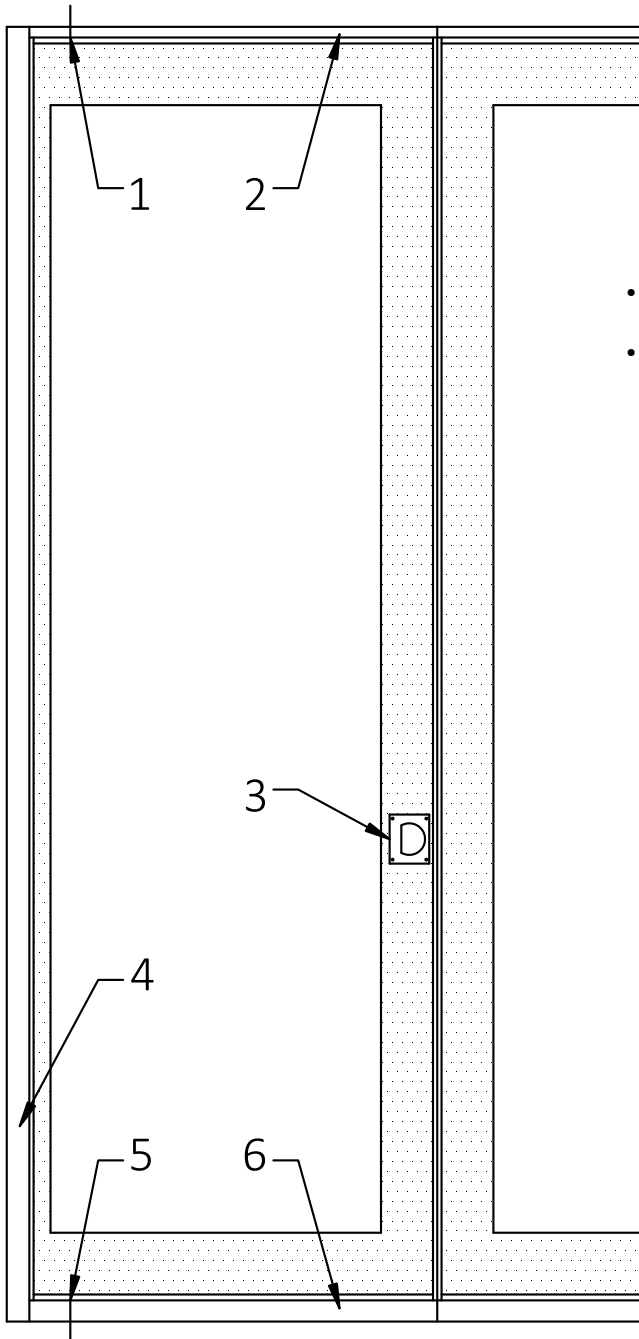




**MODERCO**

Crystal 200 Series

## Technical Data Sheet Crystal 200 Pivot Door



- Same core construction as movable partition panels
- Fixed panel

1- Pivot

2- Fixed sweeps

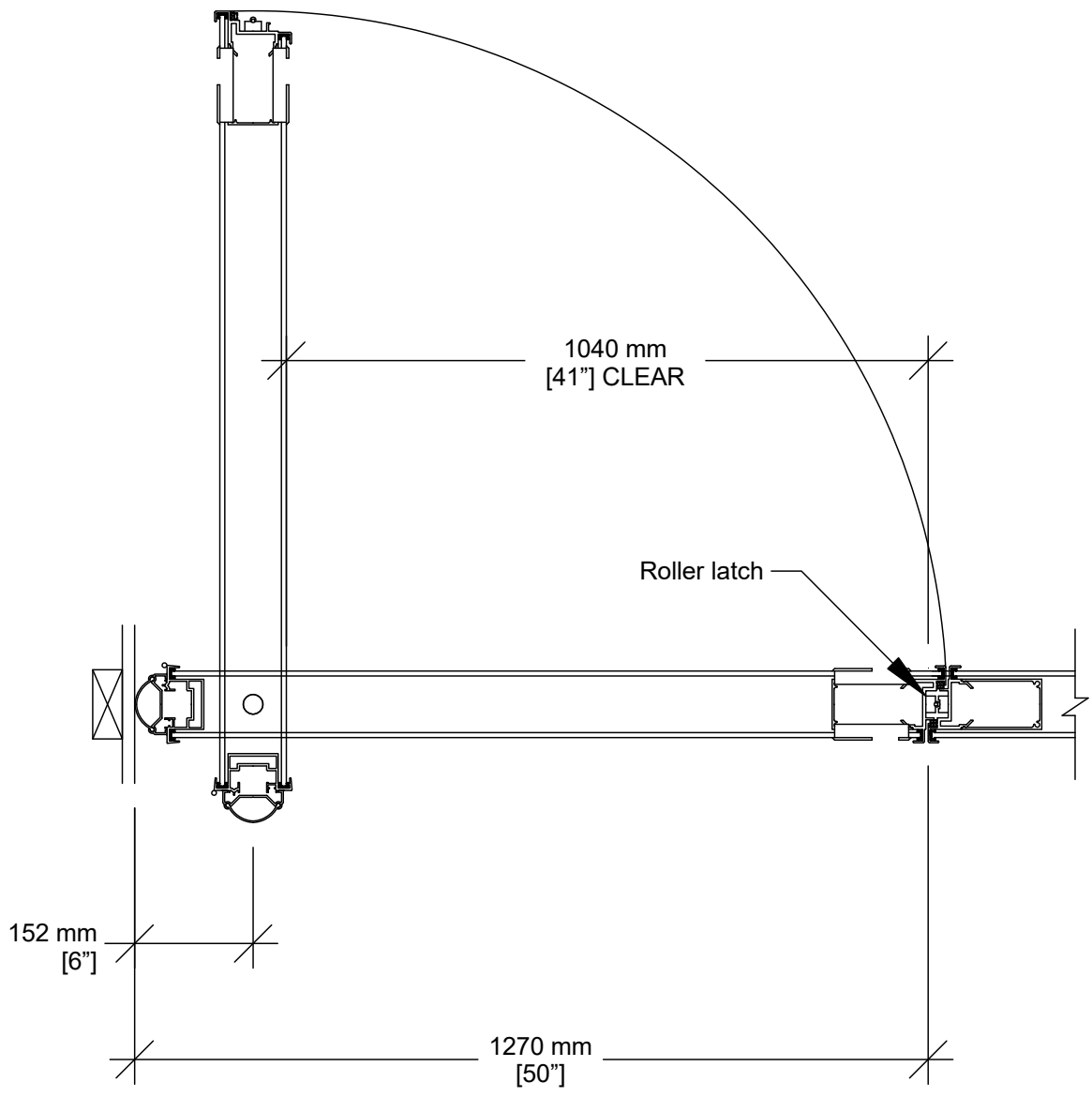
3- Flush pull

4- Bulb seal

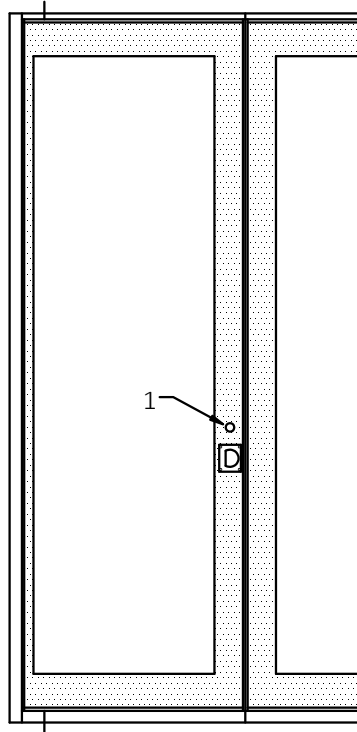
5- Pivot

6- Fixed sweeps

**Horizontal Section**



## Optional Features & Hardware



1- Deadbolt lock <sup>1</sup>

2- Concealed door closer <sup>2</sup>

3- Exit sign

- Self-luminous "Running Man" exit sign with green faceplate (standard outside USA, optional in USA)
- Photoluminescent "EXIT" sign with red faceplate (standard in USA, optional elsewhere)
- Photoluminescent "EXIT" sign with green faceplate (optional)
- Self-luminous "EXIT" sign with red faceplate (optional)
- Self-luminous "EXIT" sign with green faceplate (optional)

4- Panic bar

5- Panic bar lever (with optional lock)

<sup>1</sup> Not available with panic bar or exit sign

<sup>2</sup> Pivot door must be located opposite the stacking area of the panels.

