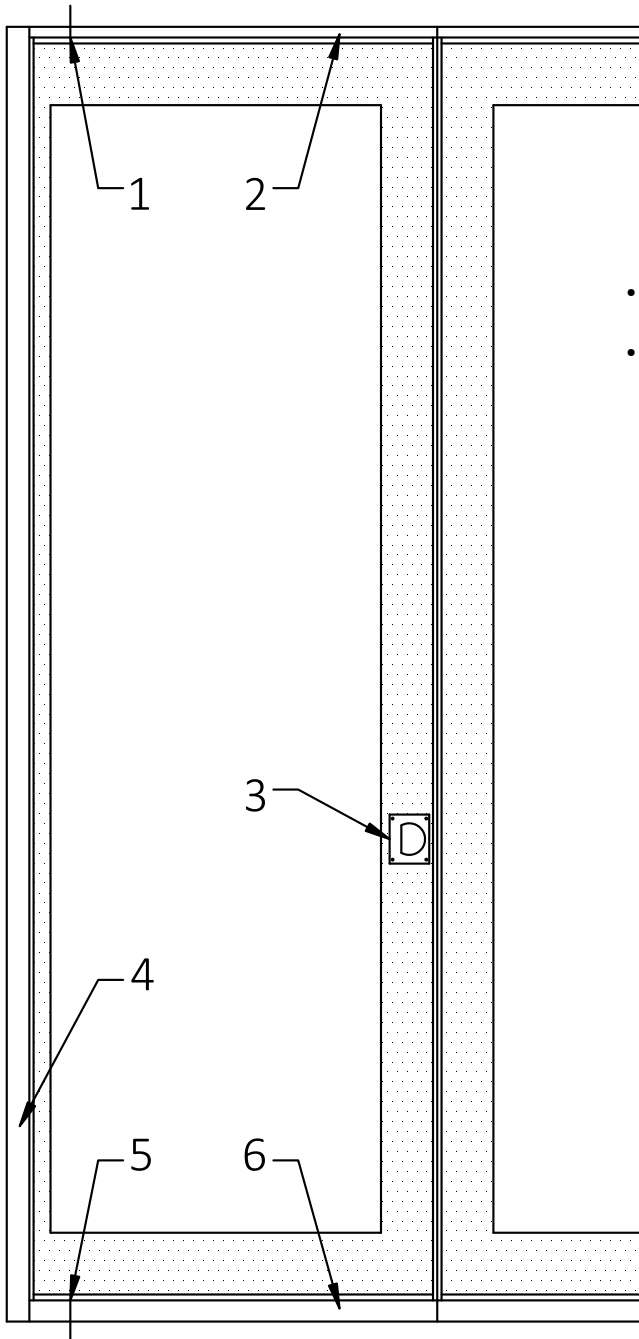




MODERCO

Crystal 200 Series

Technical Data Sheet Crystal 200 Pivot Door



- Same core construction as movable partition panels
- Fixed panel

1- Pivot

2- Fixed sweeps

3- Flush pull

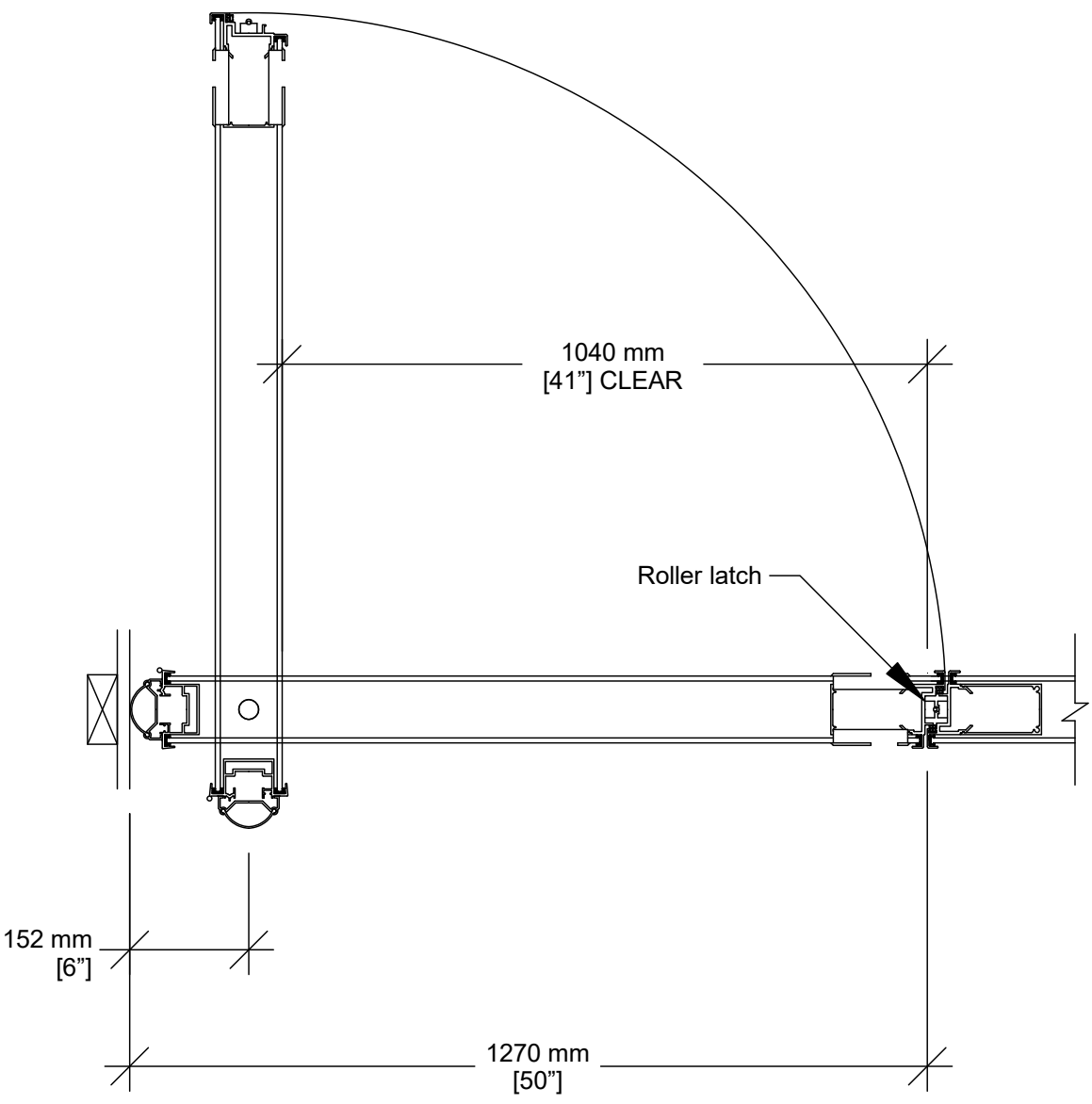
4- Bulb seal

5- Pivot

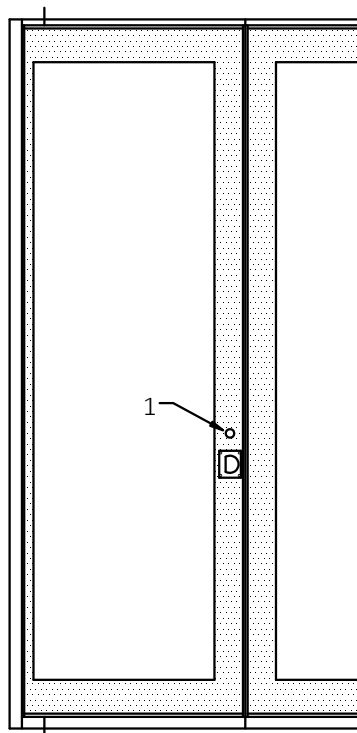
6- Fixed sweeps



Horizontal Section



Optional Features & Hardware



- 1- Deadbolt lock ¹
- 2- Concealed door closer ²
- 3- Self-luminous exit sign
 - "Running Man" exit sign with green faceplate (standard outside USA, optional in USA)
 - "EXIT" sign with red faceplate (standard in USA, optional elsewhere)
 - "EXIT" sign with green faceplate (optional).
- 4- Panic bar
- 5- Panic bar lever (with optional lock)

¹ Not available with panic bar or exit sign

² Pivot door must be located opposite the stacking area of the panels.

