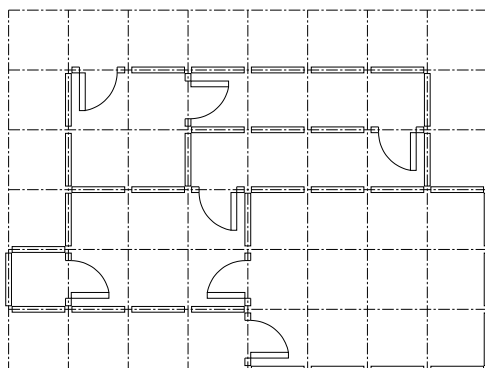




Technical Data Sheet Signature 845 Tactical Panel System



Features & Options

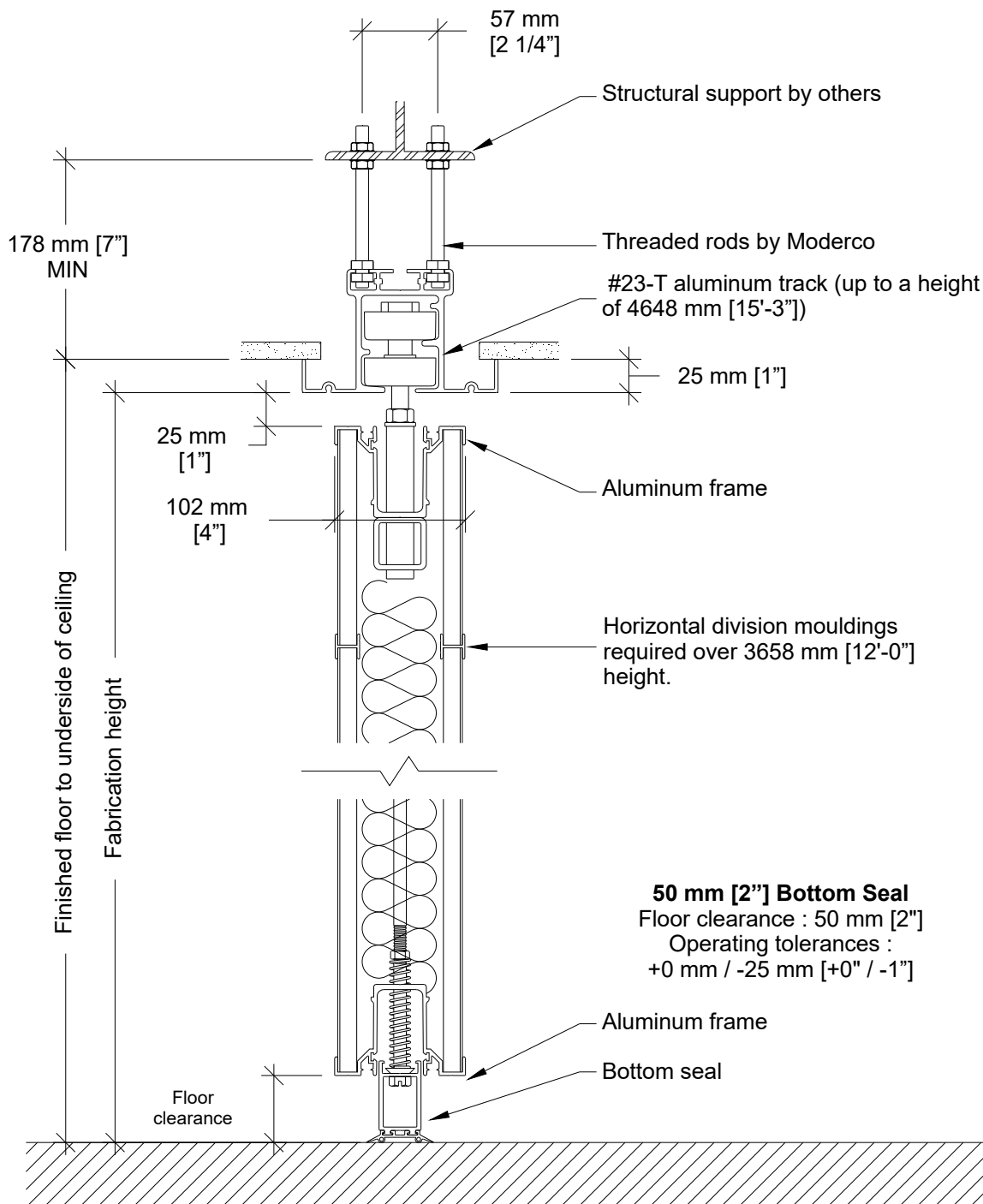
Standard Features

- Manually-operated individual panels.
- 1073 mm [42 1/4"] wide panels on 1220 mm [48"] grid.
- 102 mm [4"] nominal thickness.
- Clear-anodized steel-reinforced aluminum frame.
- Protective trims on entire perimeter.
- No top seal.
- Manually-operated bottom seal providing 50 mm [2"] floor clearance.
- Clear-anodized 6063-T6 alloy aluminum track.
- Each panel supported by two carriers made up of two horizontally-aligned precision-ground hardened steel ball bearing wheels with nylon tires.
- Plastic laminate panel skin finish.
- Maximum height: 6780 mm [22'-3"].
- 16 ga. zinc-plated flaps with magnets at intersections to close gaps.
- Folded flaps can allow panels to be moved through gaps without disturbing the entire layout.

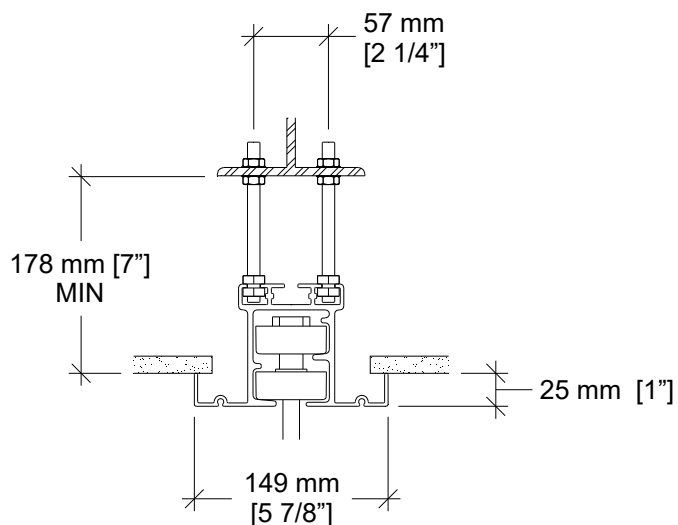
Optional Features and Accessories

- Powder-coated frame and/or track.
- Non-ADA pass door with flush pulls and roller latch. 663 mm [26 1/8"] clear opening.
- Door options:
 - window frame
 - door viewer
 - self-luminous "Running Man" exit sign with green faceplate (standard outside USA, optional in USA)
 - photoluminescent "EXIT" sign with red faceplate (standard in USA, optional elsewhere)
 - photoluminescent "EXIT" sign with green faceplate (optional)
 - self-luminous "EXIT" sign with red faceplate (optional)
 - self-luminous "EXIT" sign with green faceplate (optional)
- Tempered glass window, 915 mm [36"] wide, 1397 mm [55"] a.f.f.
- Inset white marker boards / chalk boards / natural cork tack boards.
- Eraser boxes / chalk trays.

Vertical Section

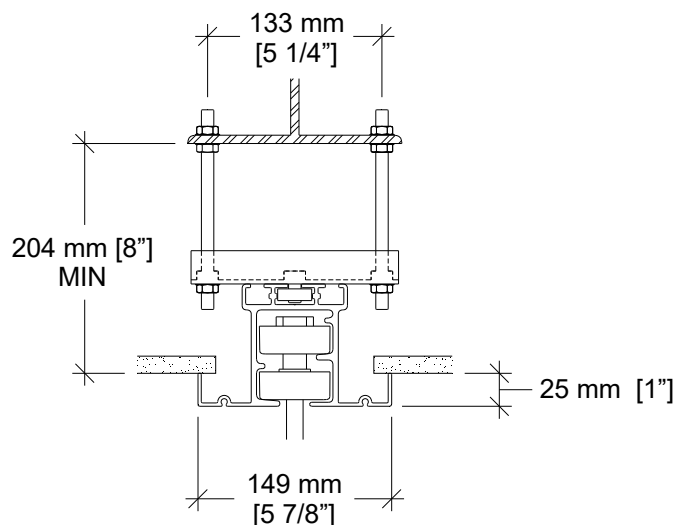


Track Options



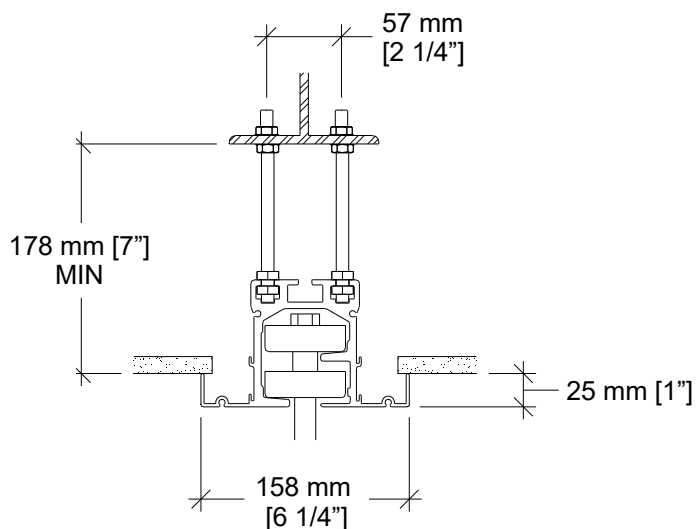
#23-T aluminum track

Standard for partitions up to a height of 4648 mm [15'-3"].



#23-T aluminum track with optional hanger bracket

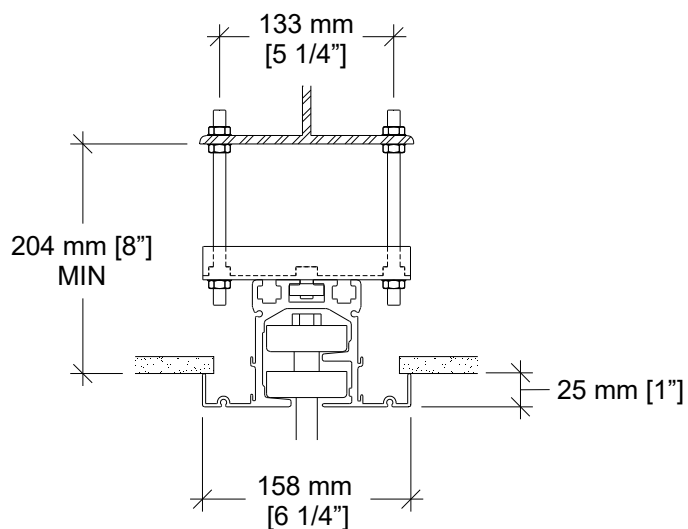
Hanger bracket required for installations where the topmost nuts cannot be used for adjustment.



#33-T aluminum track

Standard for partitions from a height of 4648 mm [15'-3"] up to 6780 mm [22'-3"].

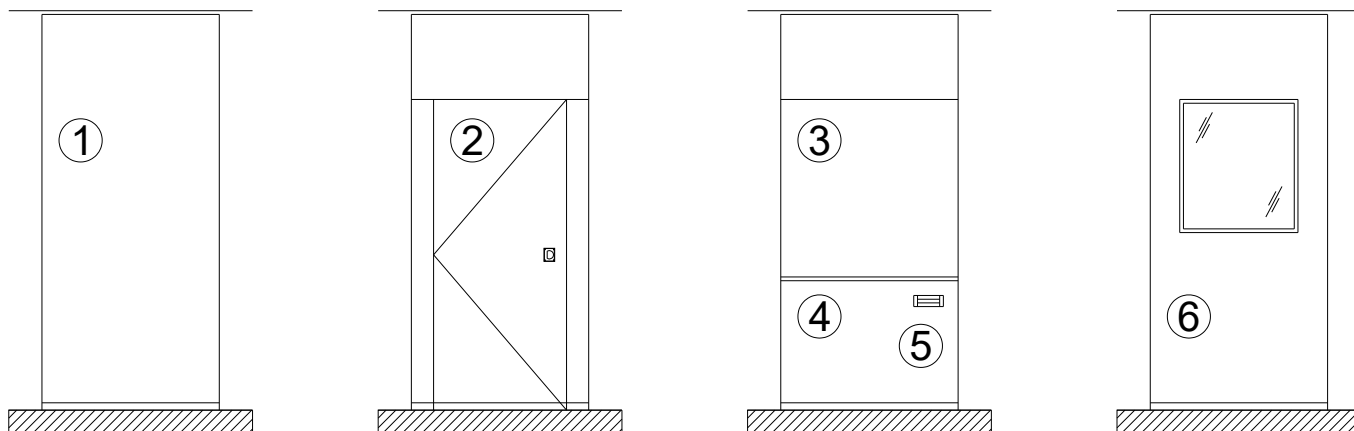
Optional for partitions up to 4648 mm [15'-3"].



#33-T aluminum track with optional hanger bracket

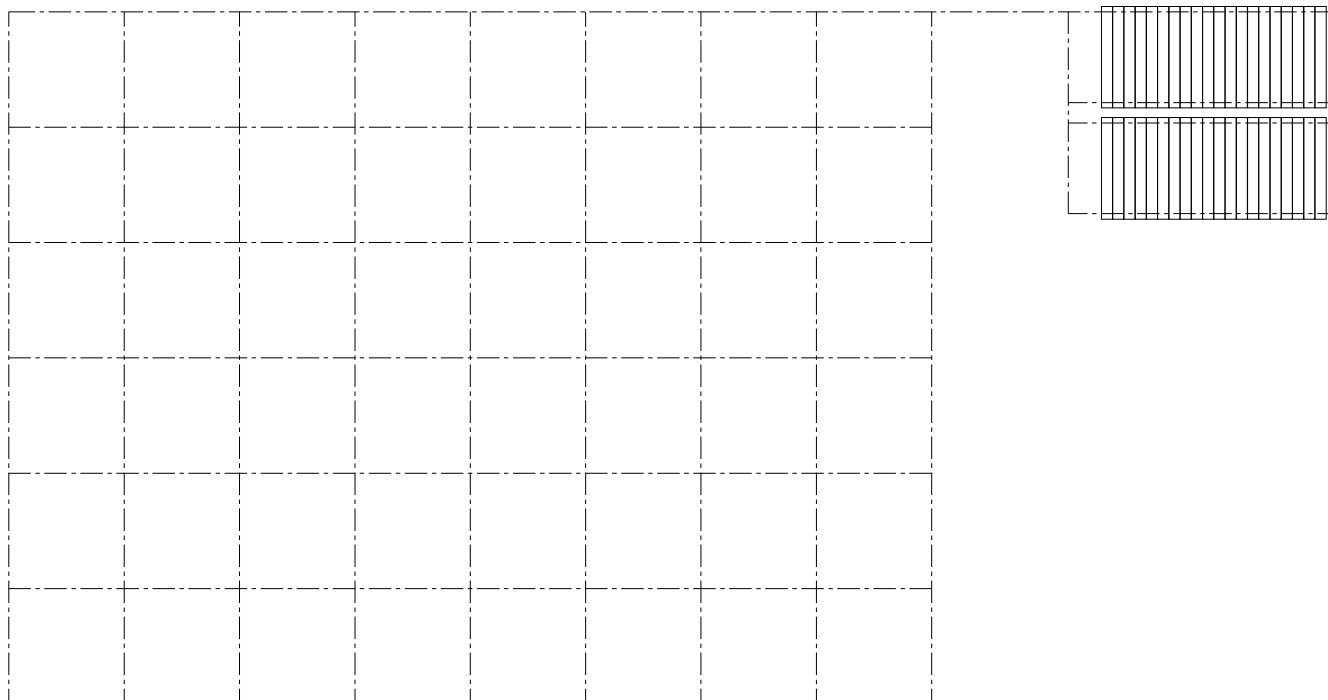
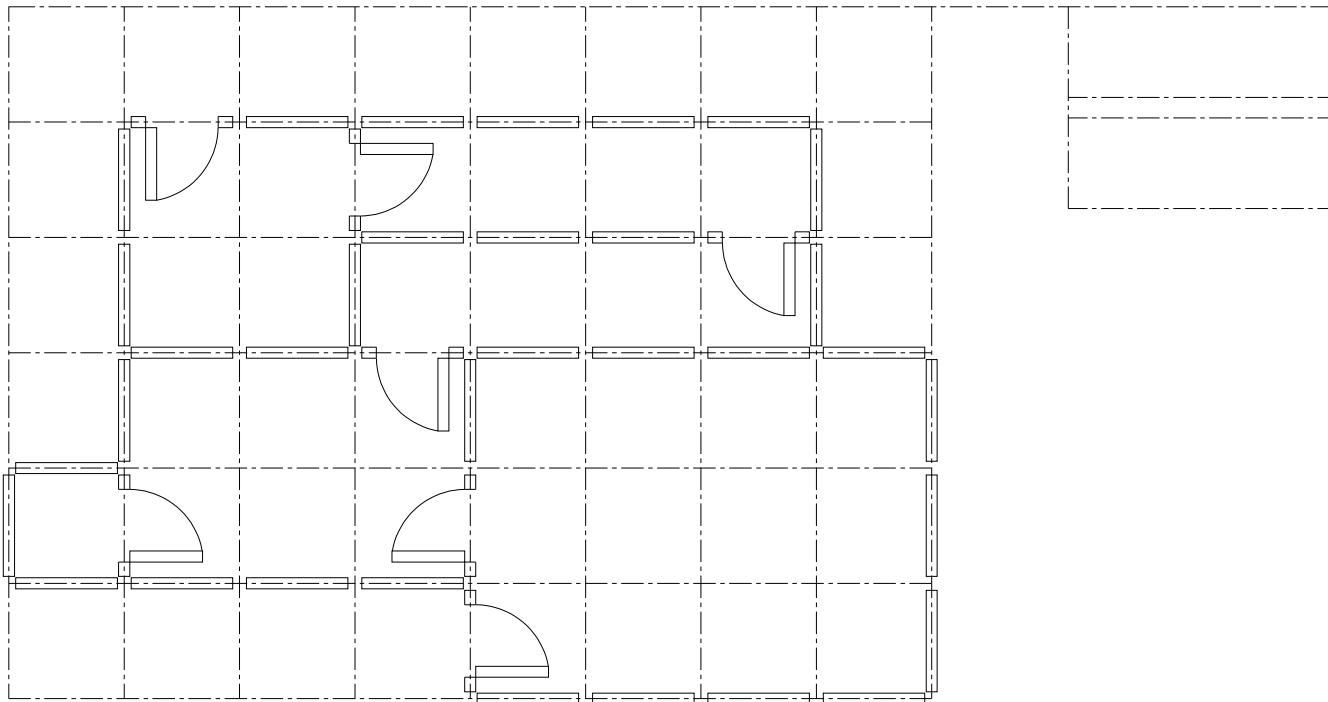
Hanger bracket required for installations where the topmost nuts cannot be used for adjustment.

Elevations

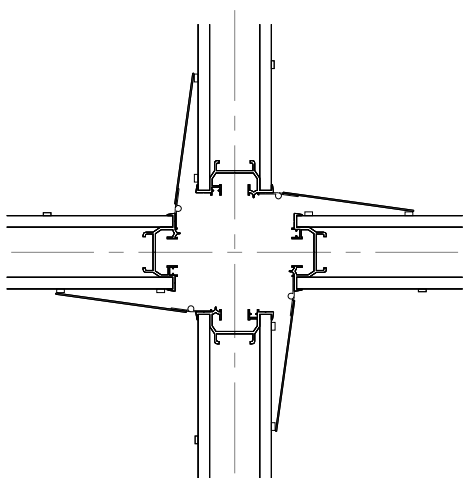


- 1- Standard panel
- 2- Single pass door
- 3- Work surface
- 4- Chalk tray
- 5- Eraser box
- 6- Window

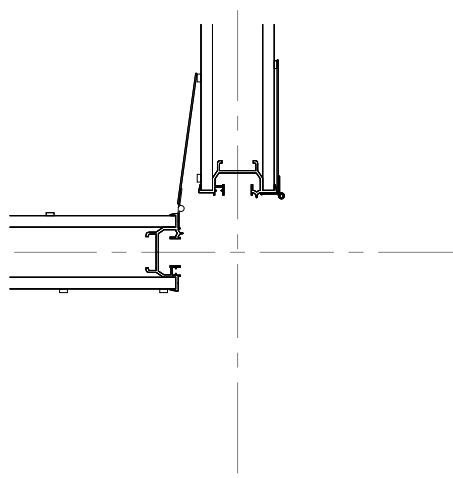
Plan View Example



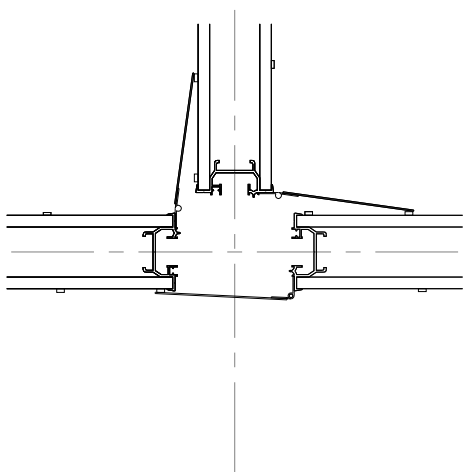
Horizontal Sections



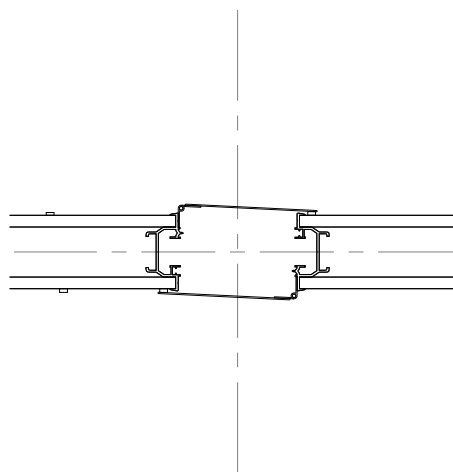
"X" Intersection



"L" Intersection



"T" Intersection



Straight line