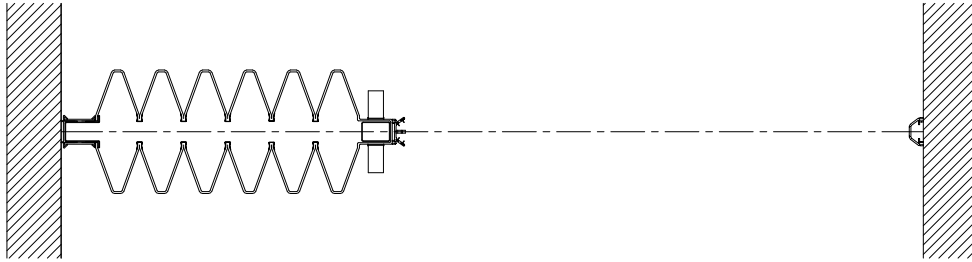




MODERCO

Unifold Series

Technical Data Sheet Unifold



Features & Options

Standards Features

- Manually-operated accordion door.
- Internal frame made of riveted 14 ga steel pantographs.
- 5-ply cardboard covers attached to pantographs.
- Trolleys with 4 nylon wheels mounted to steel ball-bearings on rolling posts.
- Trolleys with 2 nylon wheels mounted to steel ball-bearings on intermediate supports.
- Vinyl wallcovering.
- Maximum height : 3658 mm [12'-0"]

Unifold 1500

- #15 clear anodized 6063-T6 alloy aluminum track.

Unifold 3100 / 3500

- STC 31 or 35.
- (Unifold 3500) Fiber glass insulation laminated inside covers.
- Top and bottom sweep seals.
- #40 clear anodized 6063-T6 alloy aluminum track.

- Clear anodized 6063-T5 alloy aluminum ceiling guards.

Unifold 4000 / 4400

- STC 40 or 44.
- Steel liners added to cardboard covers.
- (Unifold 4400) Fiber glass insulation laminated inside covers.
- Top and bottom sweep seals.
- #40 clear anodized 6063-T6 alloy aluminum track.
- Clear anodized 6063-T5 alloy aluminum ceiling guards.

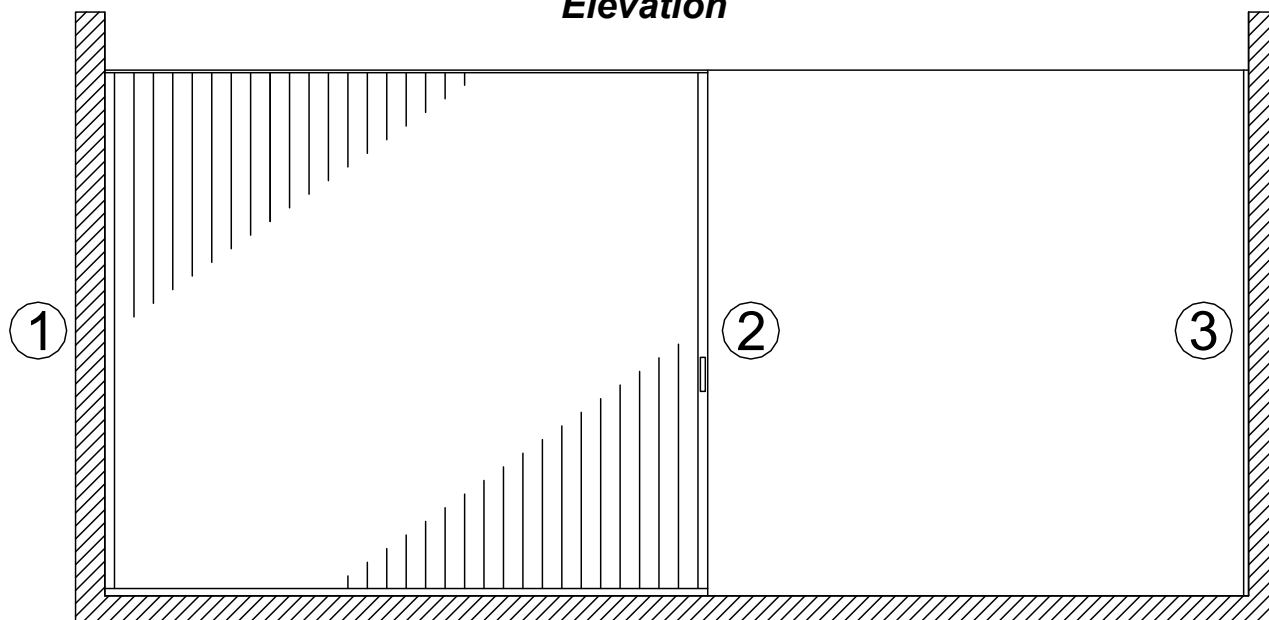
Options and Accessories :

- Painted track.
- Fabric or carpet wallcoverings.
- Wallcovering supplied by others (approval required).
- Rolling trail post.
- Rolling trail post with sliding panel.
- Paired doors.

Options and Accessories (cont'd) :

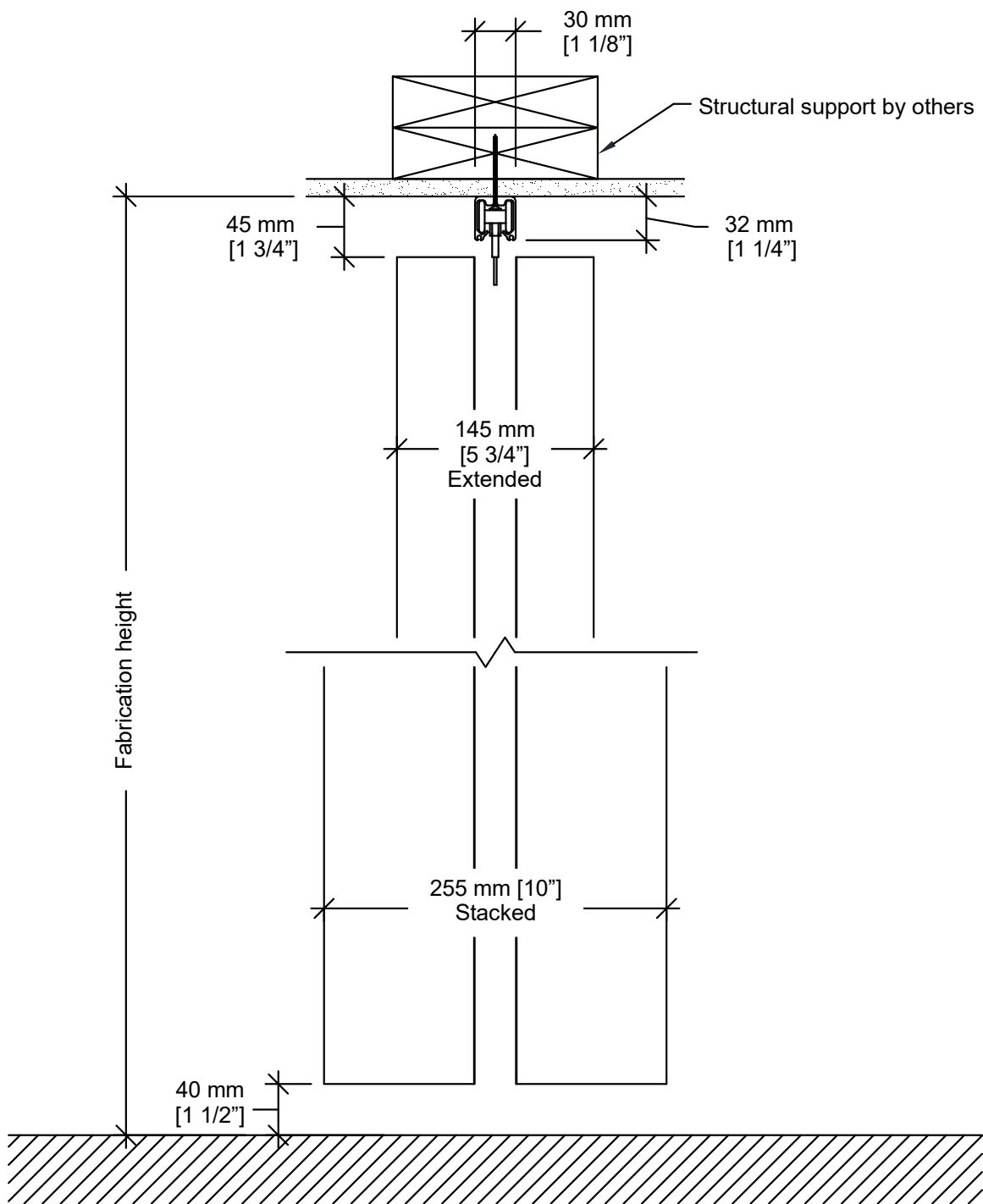
- Curved track.
- Curved track with glide switch.
- "L", "T", or "X" lead post.
- "T" or "X" free rolling post.
- Lock :
 - Keyed cylinder one side
 - Keyed cylinders two sides
 - Thumbturn one side
 - Keyed cylinder one side, thumbturn other side
- (Unifold 1500) #40 track and ceiling guards.

Elevation



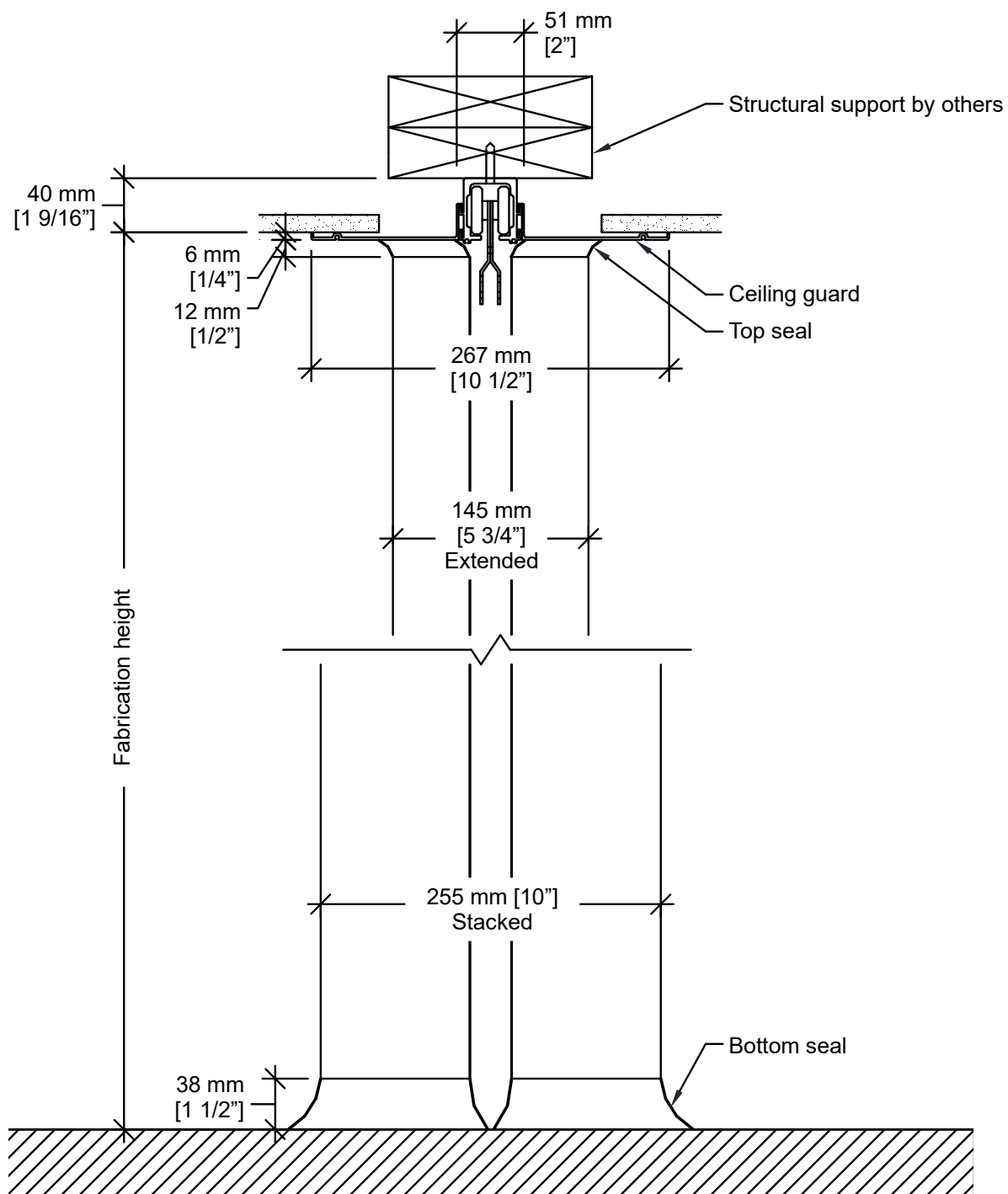
- 1- Fixed post
- 2- Lead post
- 3- Wall jamb

Vertical Sections



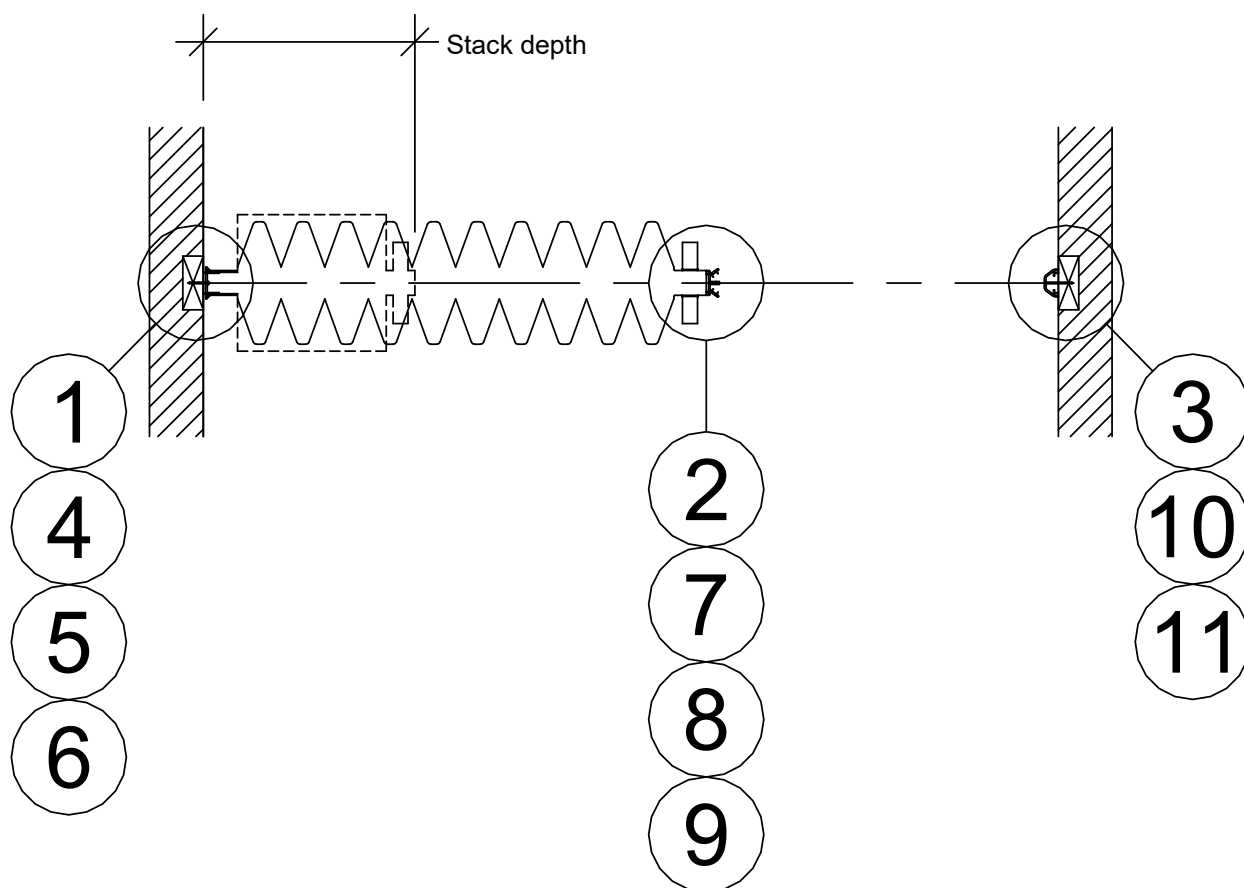
Unifold 1500

Vertical Sections (cont'd)



Unifold 3100 / 3500 / 4000 / 4400

Plan View



Stack depth formula :

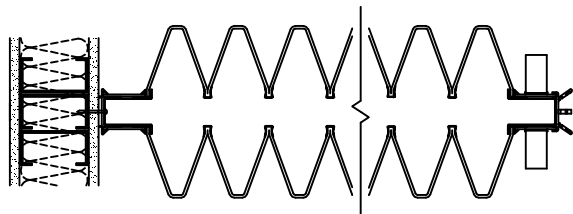
125 mm per meter of opening + 125 mm + 65 mm per field joint ¹
 [1 1/2" per foot of opening + 5" + 2 1/2" per field joint] ¹

Pocket depth should be 152 mm [6"] greater than stack depth.

¹ A field joint is used if a section of door would exceed a length of 6100 mm [20'-0"] or a weight of 225 kg [500 lbs].

Horizontal Sections

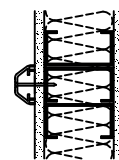
Solid blocking
by others



1 Fixed post

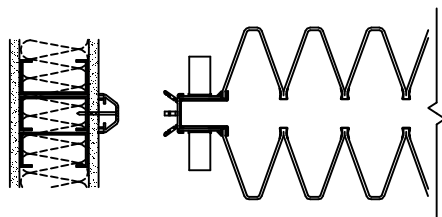
2 Lead post

Solid blocking
by others

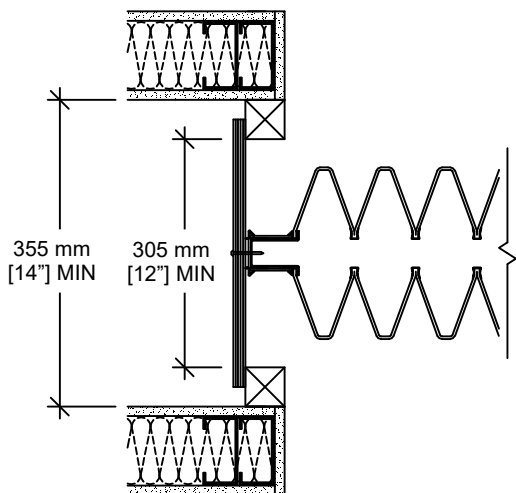


3 Wall jamb

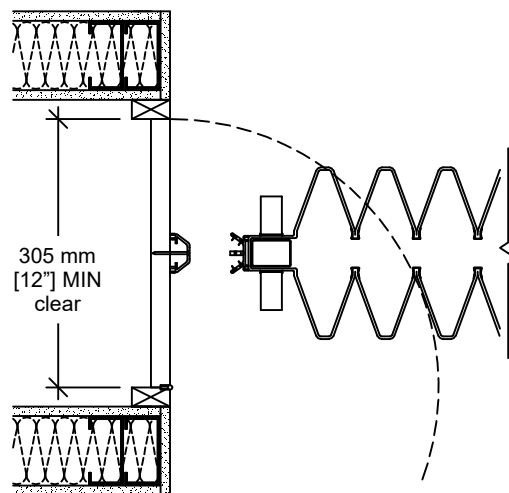
Solid blocking
by others



4 Rolling post (optional)

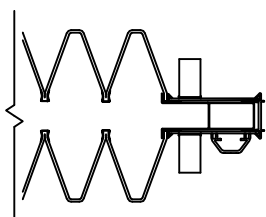


5 Sliding panel (optional)
Stops by others

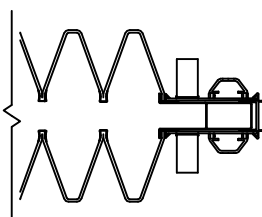


6 Pocket door (by others) and
rolling post (optional)

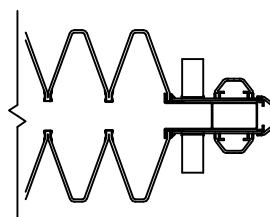
Horizontal Sections (cont'd)



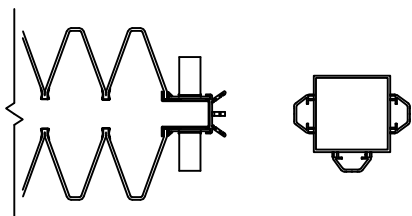
7 "L" post (optional)



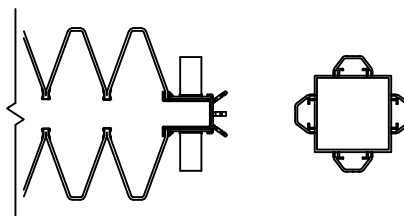
8 "T" post (optional)



9 "X" post (optional)

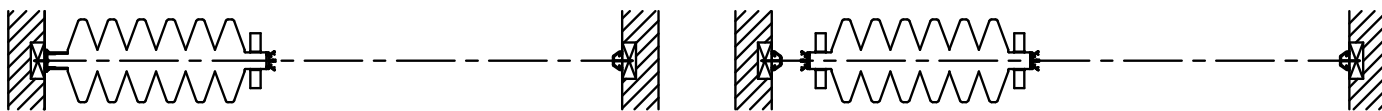


10 Free "T" rolling post (optional)



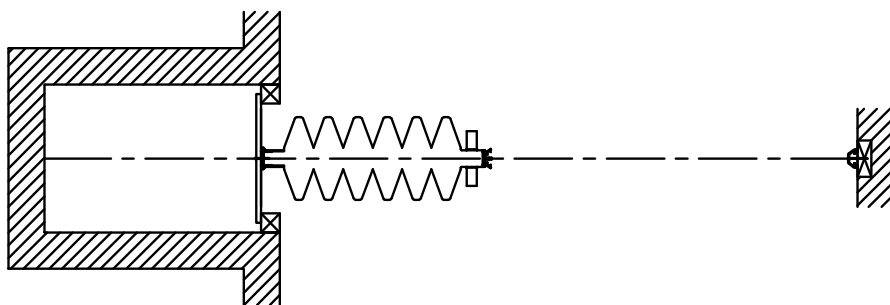
11 Free "X" rolling post (optional)

Typical Layouts

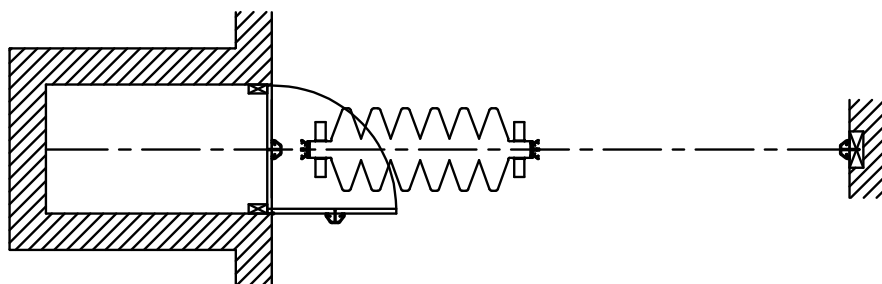


Single door

Single door with rolling post

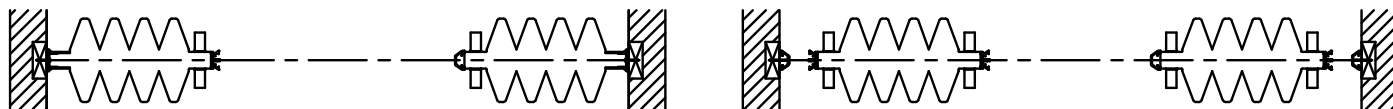


Single door with sliding panel



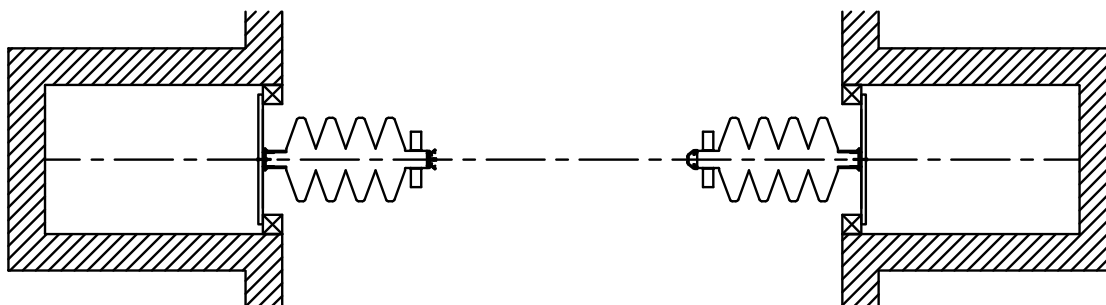
Single door with rolling post, pocket door by others

Typical Layouts (cont'd)

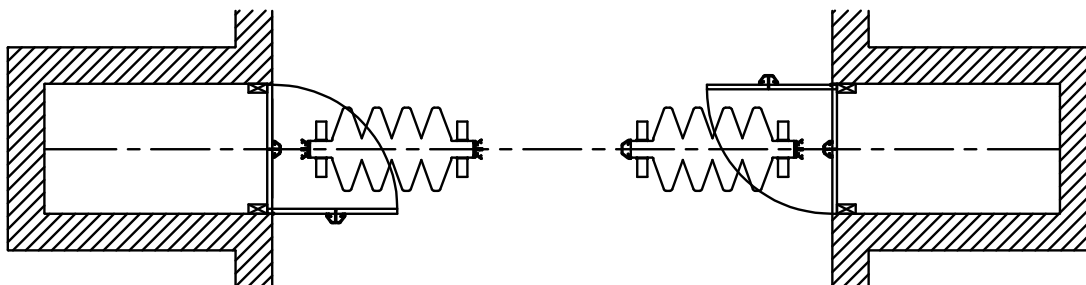


Pair

Pair with rolling posts

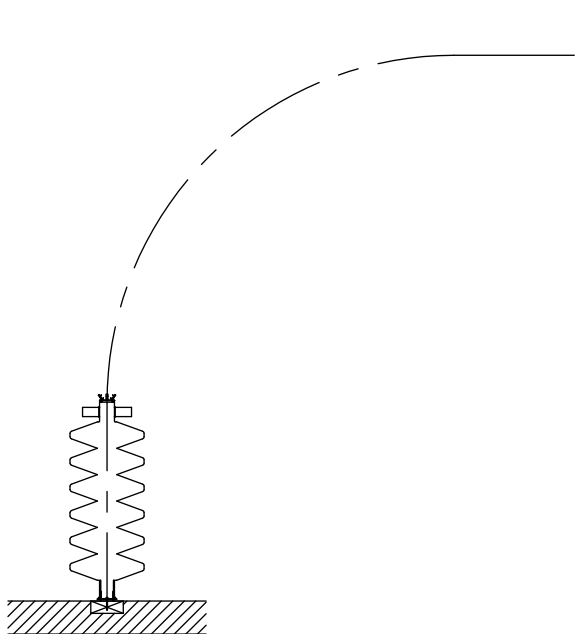


Pair with sliding panels

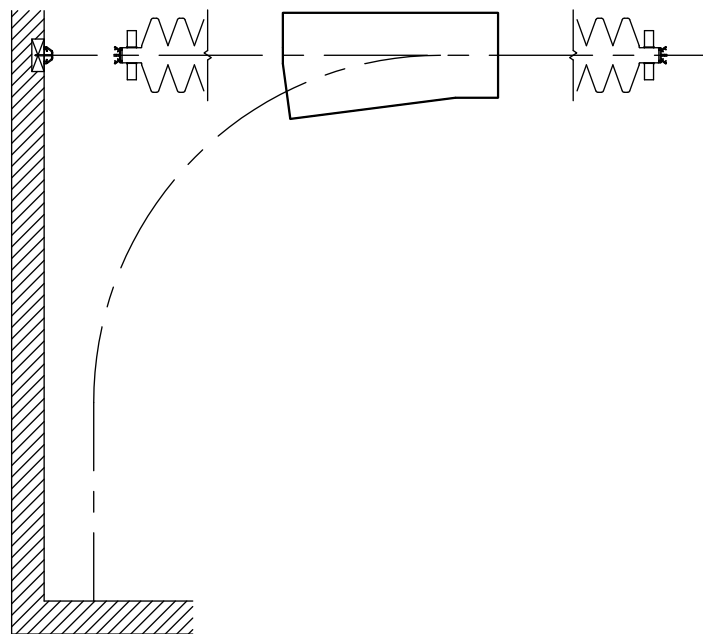


Pair with rolling posts, pocket doors by others

Typical Layouts (cont'd)



**Curved track
(#40 track required for Unifold 1500)**



**Curved track and glide switch
(#40 track required for Unifold 1500)**