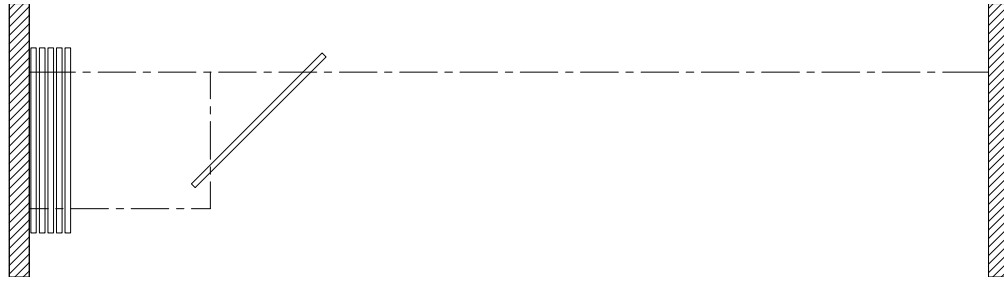


## Technical Data Sheet Vision 121



### **Features & Options**

#### **Standard Features**

- Manually-operated individual-panel glass movable partition.
- 35 mm [1 3/8"] nominal thickness. Up to 1220 mm [48"] width.
- Clear 12 mm [1/2"] tempered glass faces with polished vertical edges.
- Clear anodized aluminum horizontal mouldings with brush seals.
- Each panel fitted with a foot bolt to stabilize the partition.
- Clear anodized 6063-T6 alloy aluminum track.
- Each panel supported by two dual horizontal wheel carriers with nylon tires over hardened precision ground steel ball bearing wheels.
- Maximum height : 3658 mm [12'-0"].

#### **Optional Features and Accessories**

- Powder-coated horizontal mouldings and/or track.
- Glass finishes : stained, colored, acid washed, frosted, etc.

- 11 ga. steel track with programmable switches, painted white.
- Floor bolt lock, one side.
- Deadbolt floor lock with
  - thumb turn cylinder, one side;
  - keyed and thumb turn cylinders;
  - keyed cylinder, one side;
  - keyed cylinders, both sides.
- Final closure by 305 mm [12"] pivot panel.
- Final closure by 305 mm [12"] flap panel.
- Final closure by ADA-compliant pivot door.

#### Optional pivot door hardware:

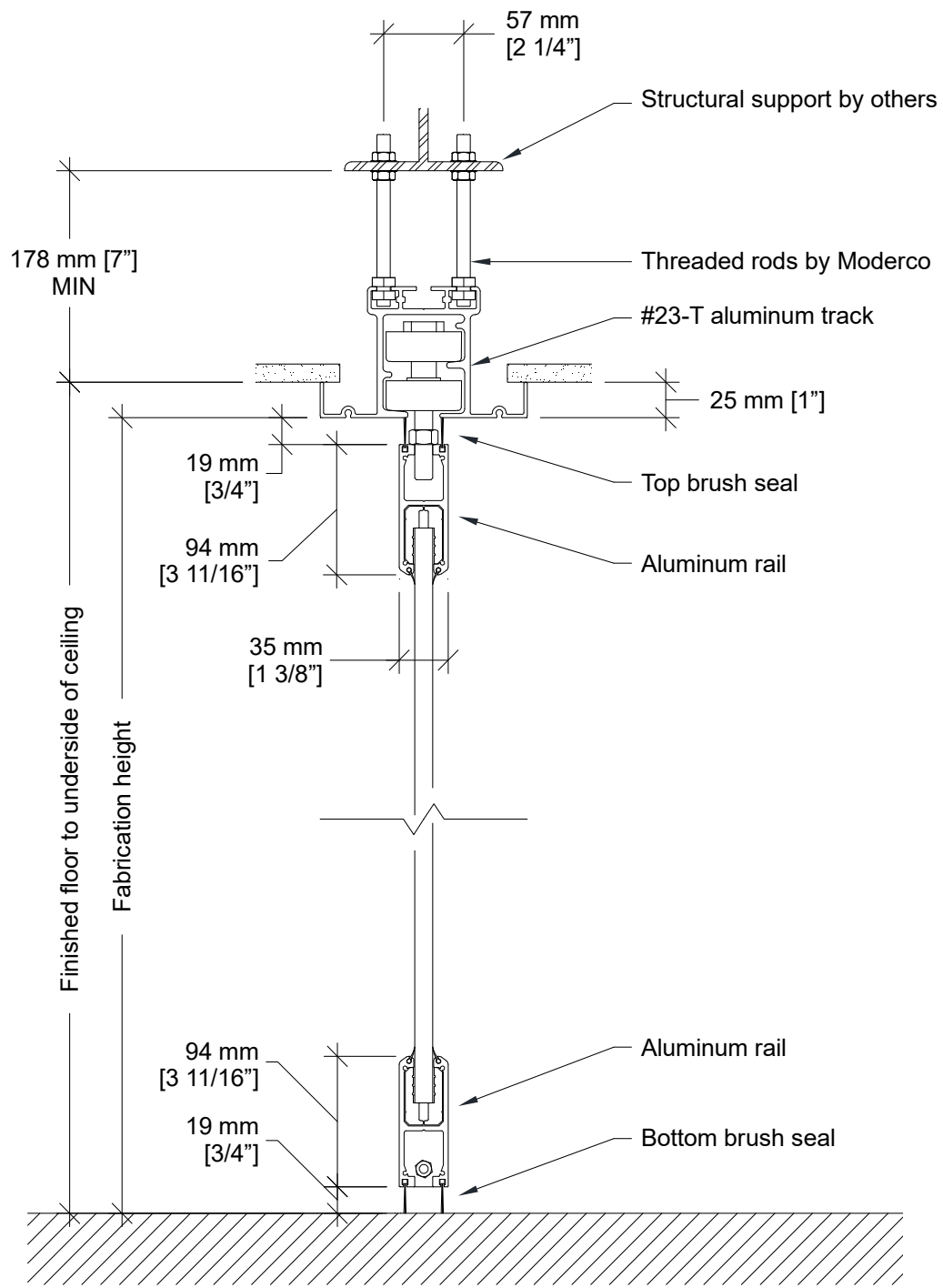
- Keyed lock and thumb turn.
- Deadbolt floor lock with:
  - thumb turn cylinder, one side;
  - keyed and thumb turn cylinders;
  - keyed cylinder, one side;
  - keyed cylinders, both sides.

- Full-height pass through door.

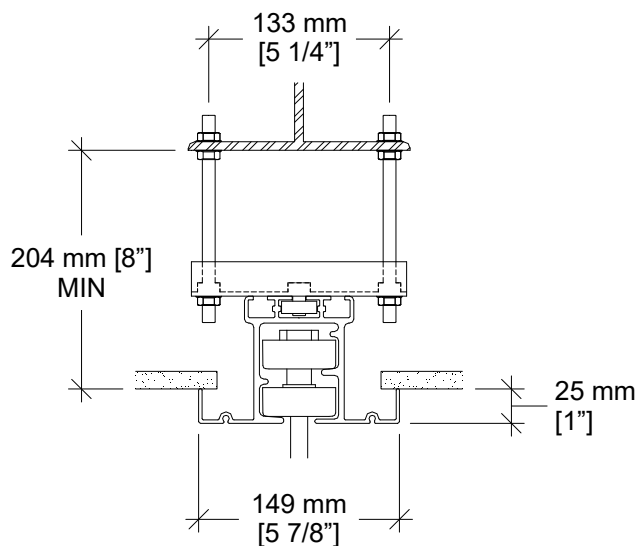
#### Optional door hardware:

- Keyed lock and thumb turn.
- Self-closing spring hinges

### Vertical Section

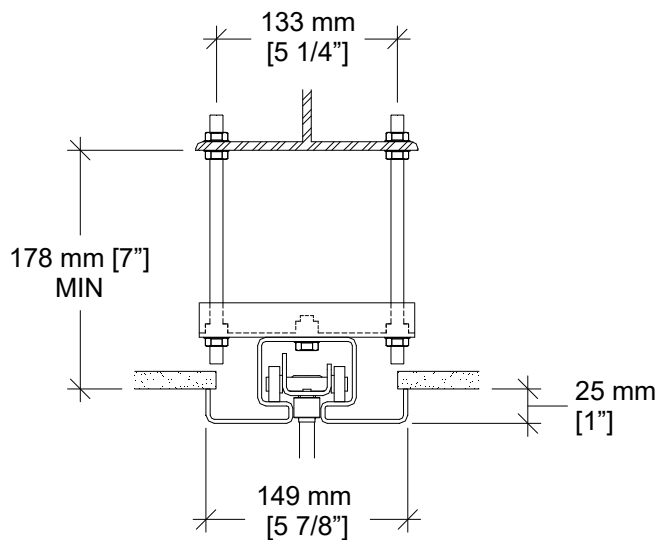


### Track Options



**Optional Hanger Bracket**

Required for installations where the topmost nuts cannot be used for adjustment.

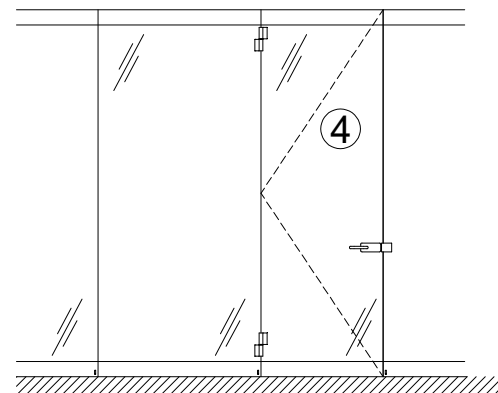
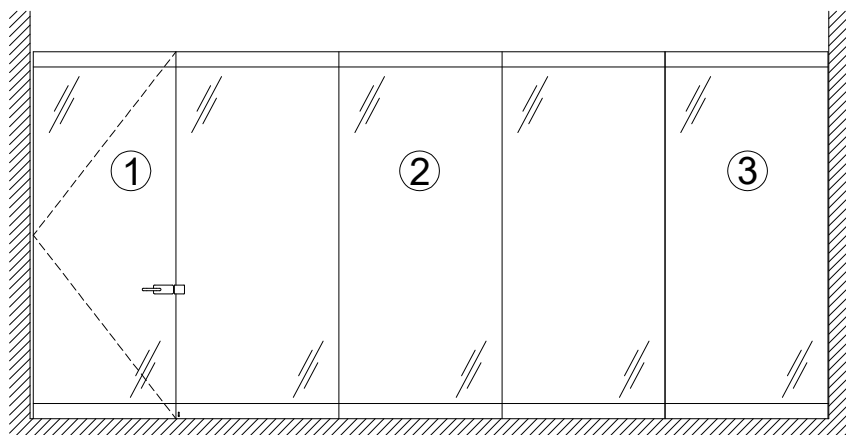


**#72 steel track with hanger bracket**

Programmable switches.

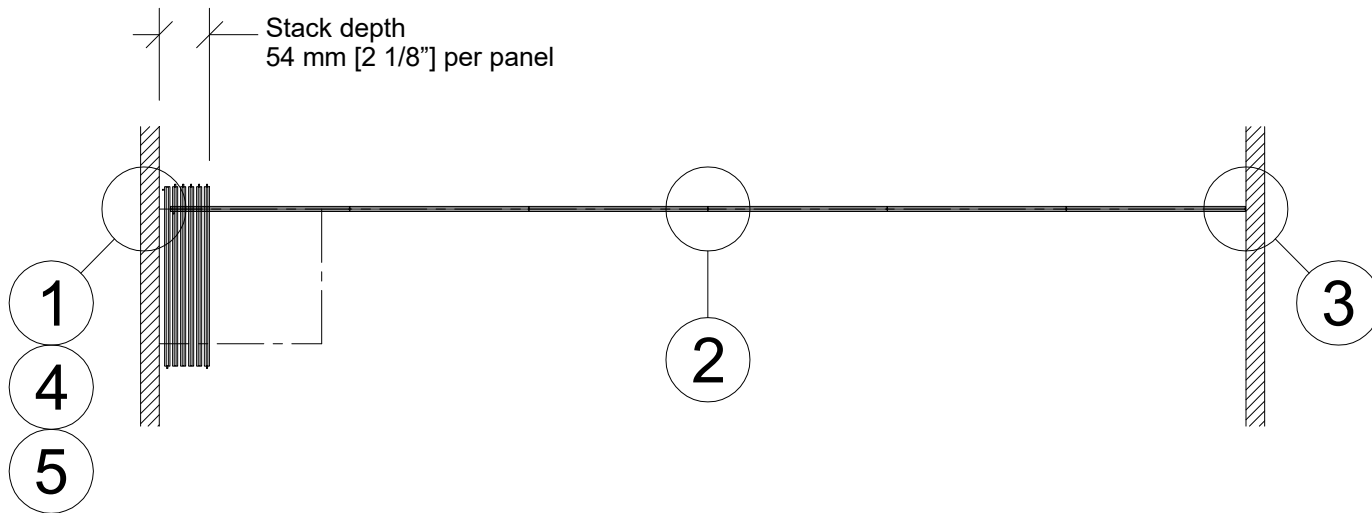
Requires pivot door.

### Elevation

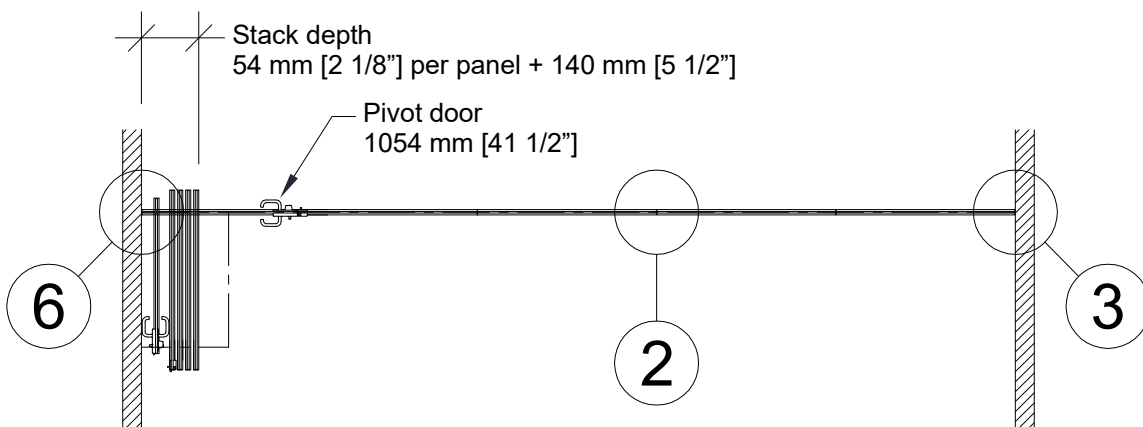


- 1- Optional pivot door
- 2- Intermediate panel
- 3- Lead panel
- 4- Optional Full-height pass door

**Plan Views**

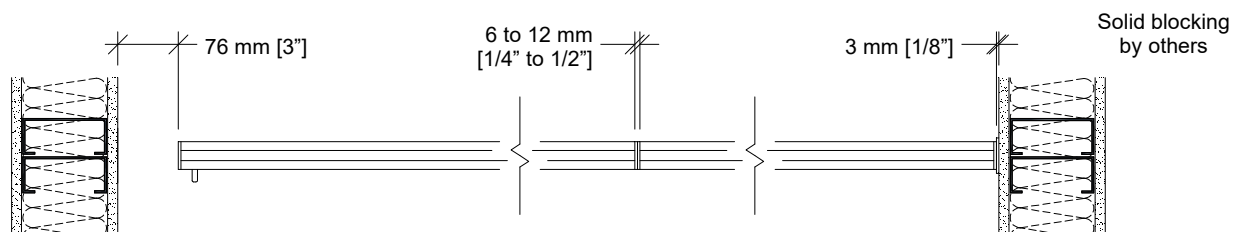


**Wall to wall layout**



**Pivot door**

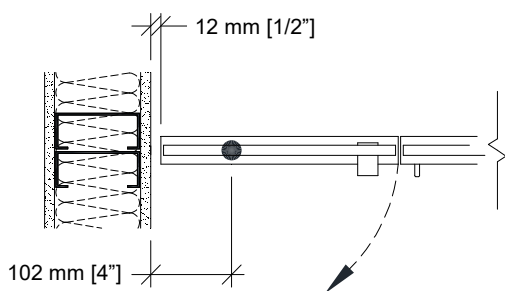
### Horizontal Sections



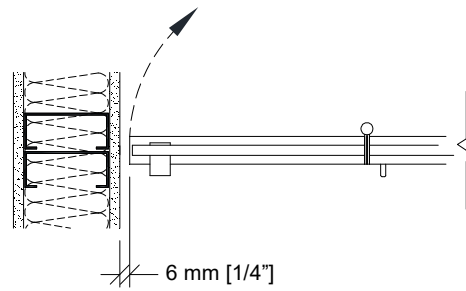
1 Trail end

2 Panel joint

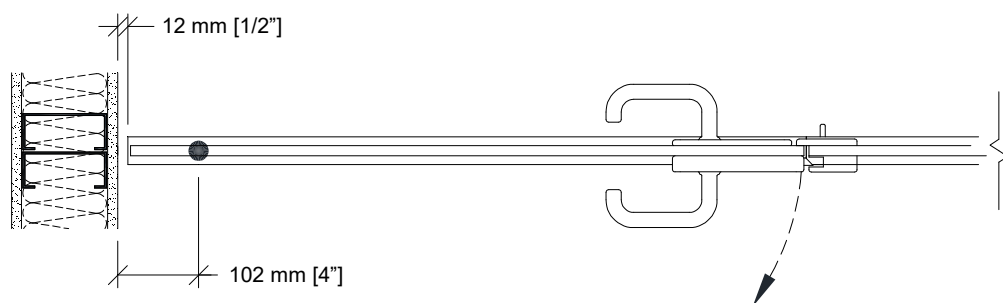
3 Lead end



4 Optional pivot closure panel

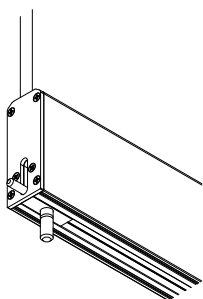


5 Optional flap closure panel

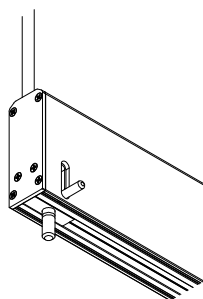


6 Optional pivot door

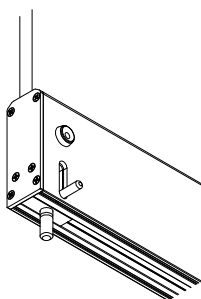
## Floor Bolts



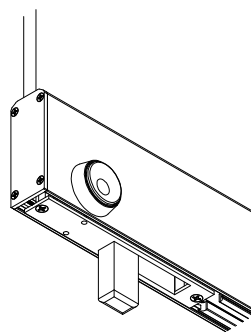
Edge-activated floor bolt.



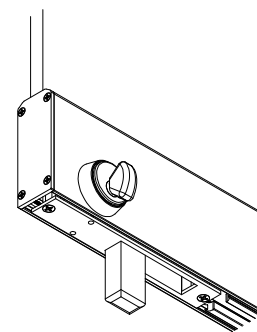
Face-activated floor bolt.



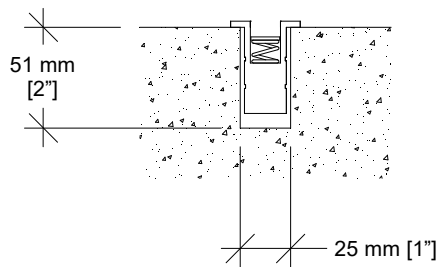
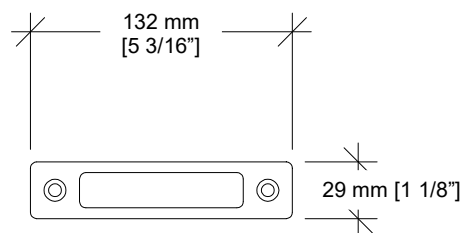
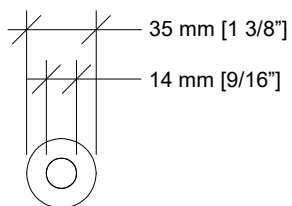
Floor bolt lock.



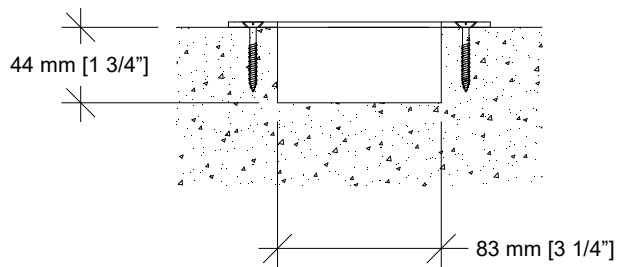
Deadbolt floor lock with keyed cylinder.



Deadbolt floor lock with thumb turn.



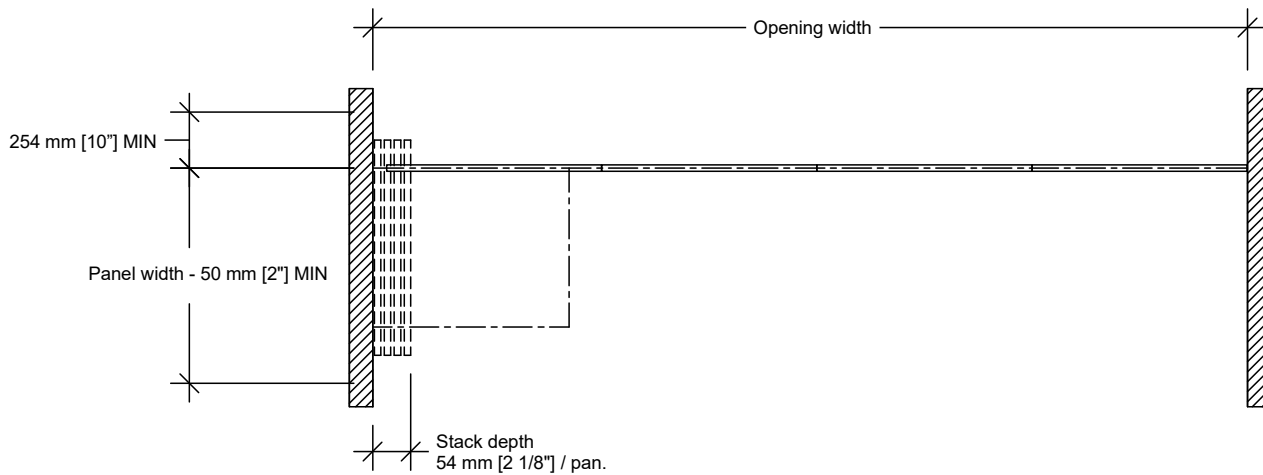
Dust-proof strike for floor bolt.



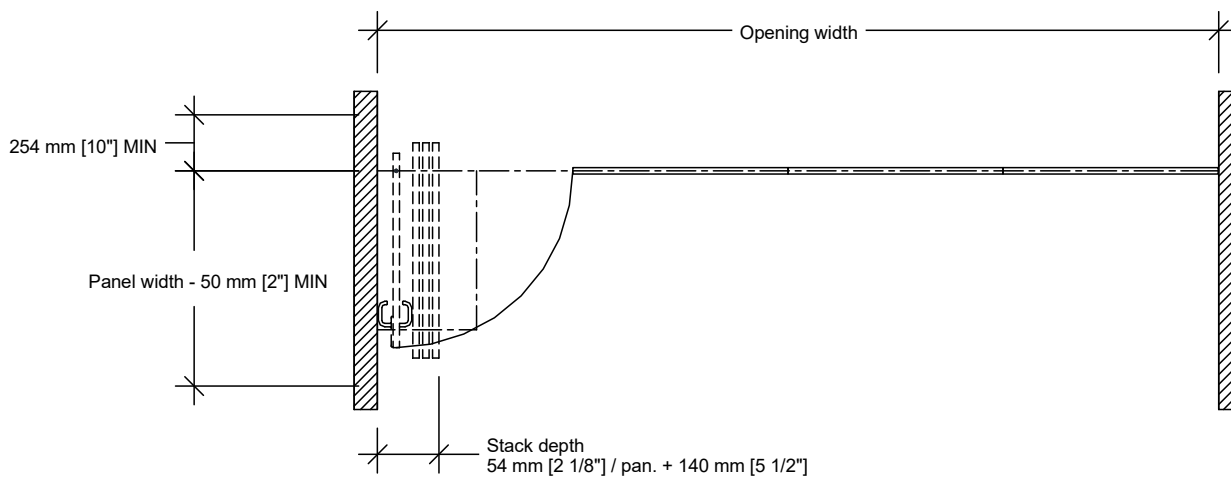
Strike for deadbolt floor lock.



### Typical Layouts - #23-T Track

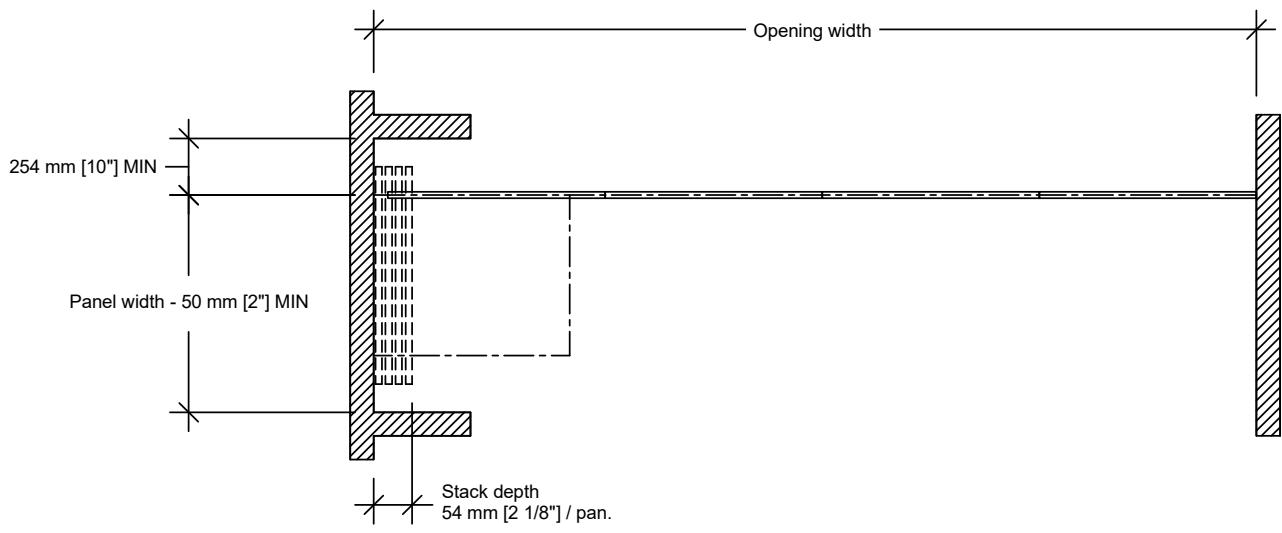


### Wall to wall Side Stack

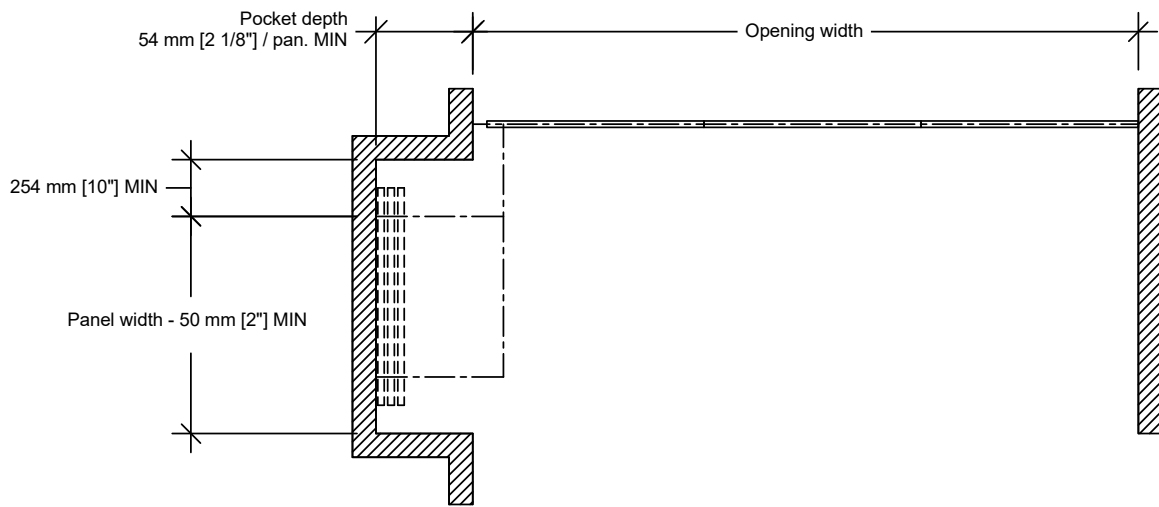


### Wall to wall Side Stack - pivot door

**Typical Layouts - #23-T Track (cont'd)**



**Pocket**

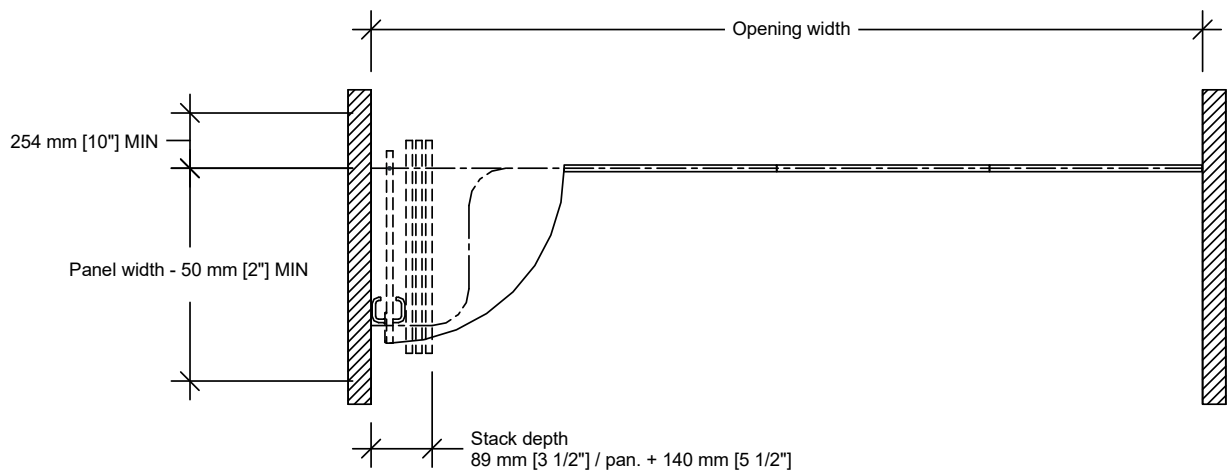


**Remote Stack**





**Typical Layout - #72 Track**



**Wall to wall Side Stack – pivot door**