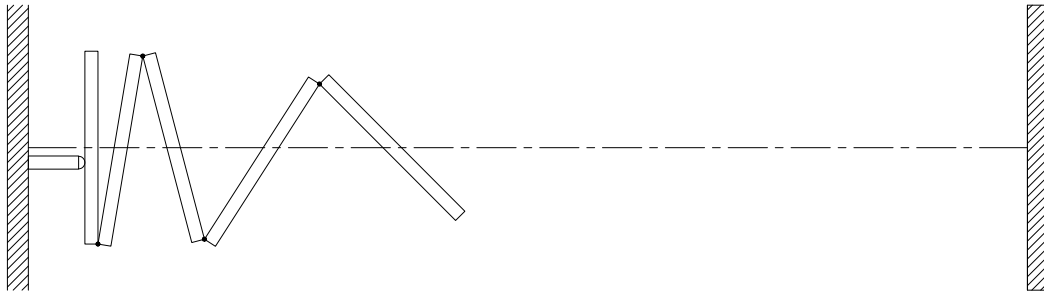




**MODERCO**

Excel 700 Series

## Technical Data Sheet Excel 733-E



### Features & Options

#### Standard Features

- Electrically-operated continuously-hinged movable partition.
- Driven by #35 roller chain.
- STC 48 or 52.
- Steel faces laminated to gypsum board.
- 85 mm [3 3/8"] nominal thickness. 1230 mm [48 1/2"] maximum width.
- 16 ga. welded steel frame.
- Trimless vertical edges.
- Clear anodized horizontal mouldings and bottom seal.
- Combination aluminum and vinyl tongue and groove vertical sound seals between panels.
- Final closure by lateral wall jamb.
- Steel hinges.
- Clear-anodized 6063-T6 alloy aluminum track.
- Each panel supported by one 4-wheeled carrier with steel tires over hardened steel ball bearing wheels.
- Vinyl wallcovering.

- Type FA horizontal seals:
  - Fixed top sweeps
  - Automatic retractable bottom seals set as panels are deployed
  - bottom seals provide a 50 mm [2"] floor clearance.
- Maximum height: 4950 mm [16'-3"].  
Maximum length: 24400 mm [80'-0"].
- UL/ULC listed drive unit with NEMA-1 motor enclosure and controls and control enclosure conform to ANSI/NEMA ICS1, ICS 2 and ICS 6.
- 1.5 hp / 120 V / 1 ph / 60 Hz
- Travel controlled by limit switches.
- Operation by two simultaneously-activated key switches located on each side of the partition.
- Emergency release mechanism for manual operation during power outage.

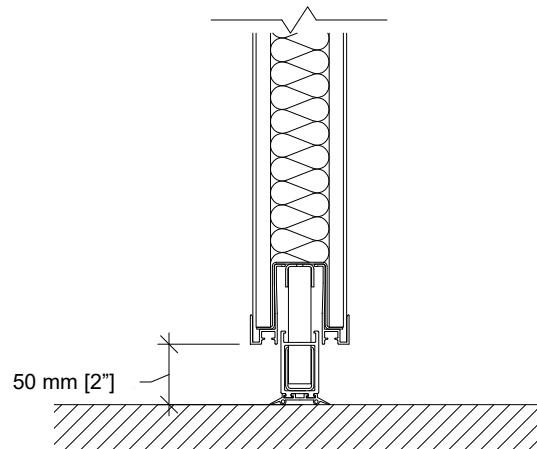
#### Optional Features and Accessories

- Powder-coated panel frame and/or track.
- Fabric wallcovering or full-height marker board.
- Owner-supplied wallcovering (approval required).
- Inset standard white marker boards.
- Eraser boxes.

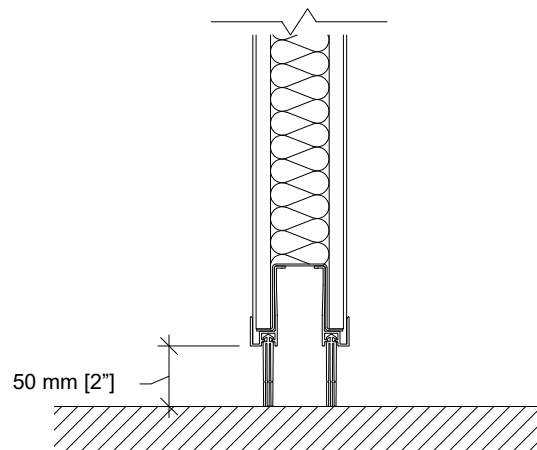
**Optional Features and Accessories (cont'd)**

- Type FF horizontal seals :
  - Fixed top and bottom sweeps
  - bottom seals provide a 50 mm [2"] floor clearance
  - required for bi-parting layouts.
  
- ADA-compliant pass door with flush pulls and roller latch.  
 2590 mm [8'-6"] ceiling height required with FF seals.  
 2945 mm [9'-8"] ceiling height required with FA seals.
  
- Door options:
  - concealed automatic closer
  - self-luminous "Running Man" exit sign with green faceplate (standard outside USA, optional in USA)
  - photoluminescent "EXIT" sign with red faceplate (standard in USA, optional elsewhere)
  - photoluminescent "EXIT" sign with green faceplate (optional)
  - self-luminous "EXIT" sign with red faceplate (optional)
  - self-luminous "EXIT" sign with green faceplate (optional)
  - deadbolt lock (not available with exit sign).
  
- 3-section pocket door fitted with limit switches to prevent operation of the partition until the pocket door is fully opened.

**Horizontal Seals**

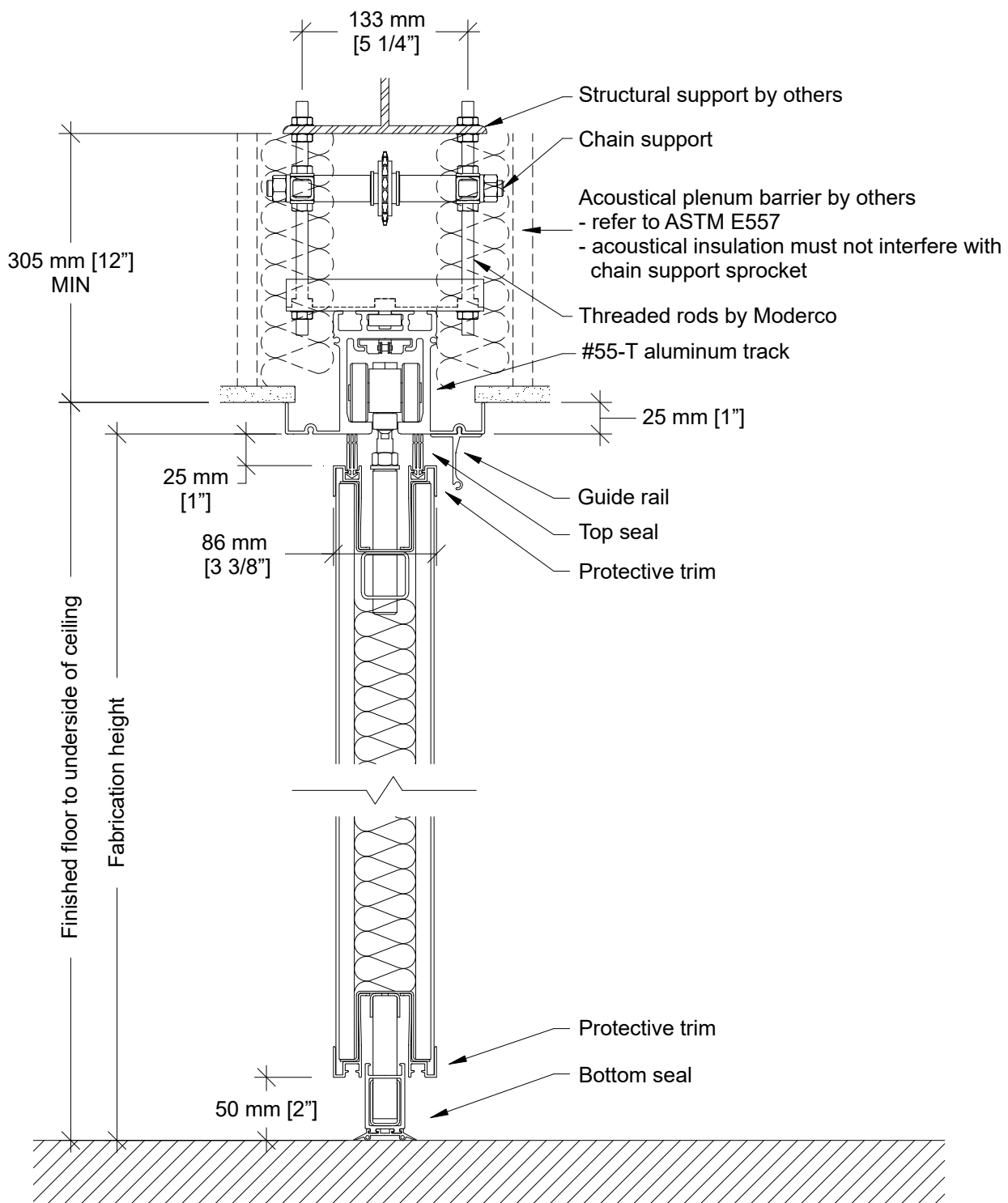


**Type FA**  
 Floor clearance : 50 mm [2"]  
 Operating tolerances :  
 +0 mm / -38 mm [+0" / -1 1/2"]

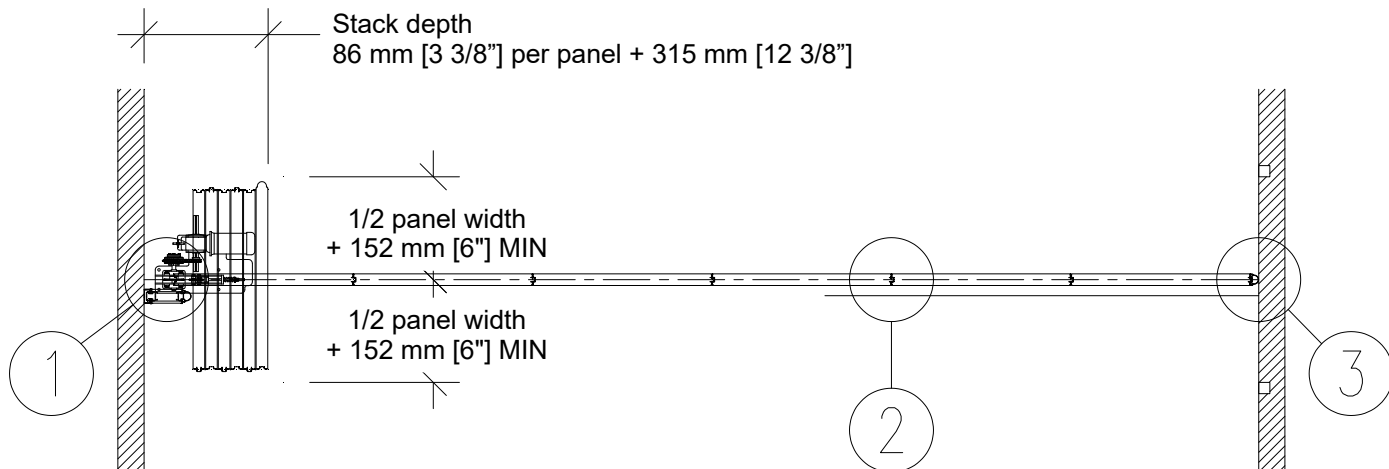


**Type FF**  
 Floor clearance : 50 mm [2"]  
 Operating tolerances :  
 +0 mm / -38 mm [+0" / -1 1/2"]

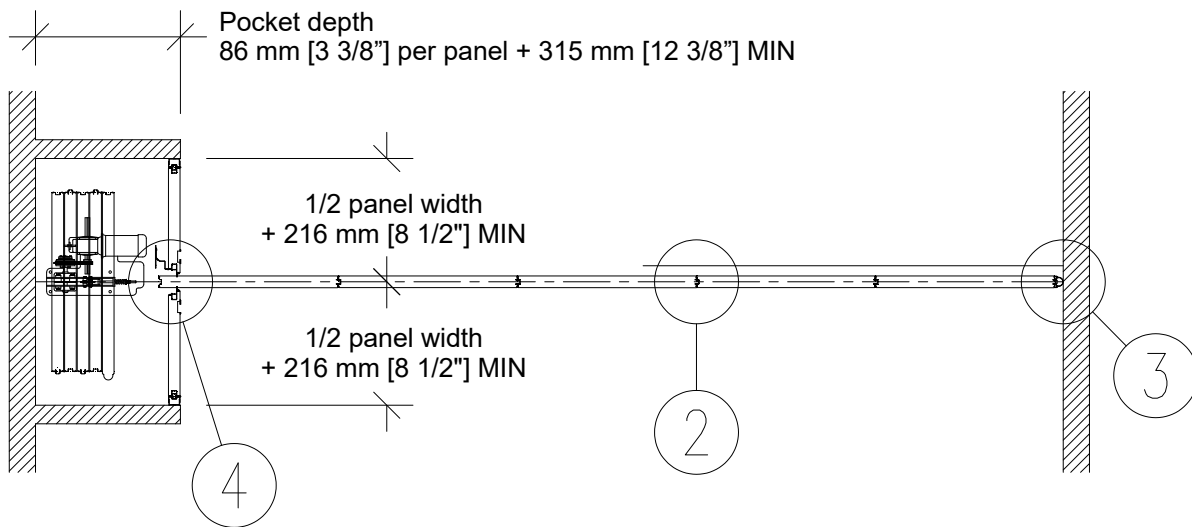
### Vertical Section



### Plan Views

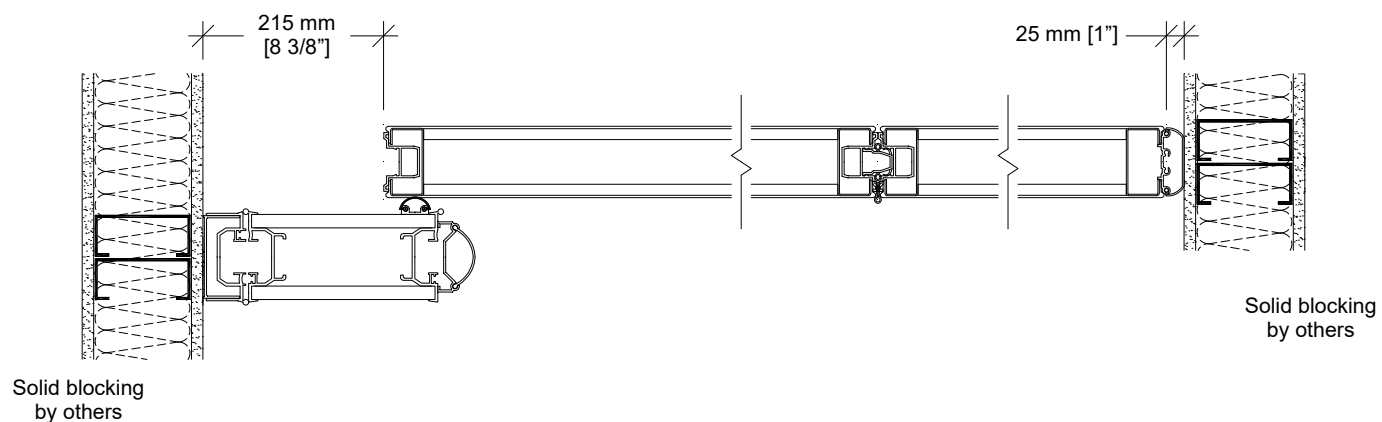


### Wall to wall



### Wall to pocket with PA-73 acoustical pocket door

### Horizontal Section



1

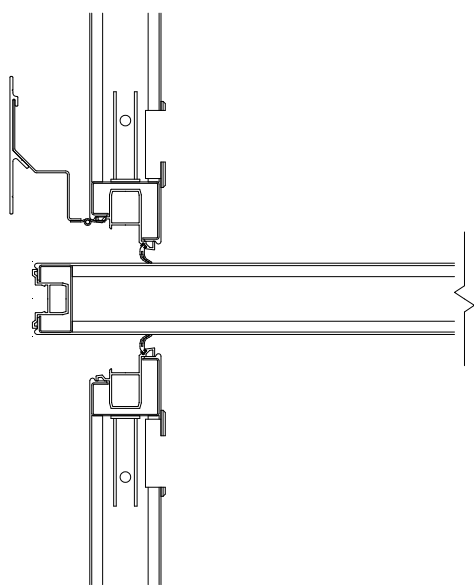
Side jamb closure

2

Panel joint

3

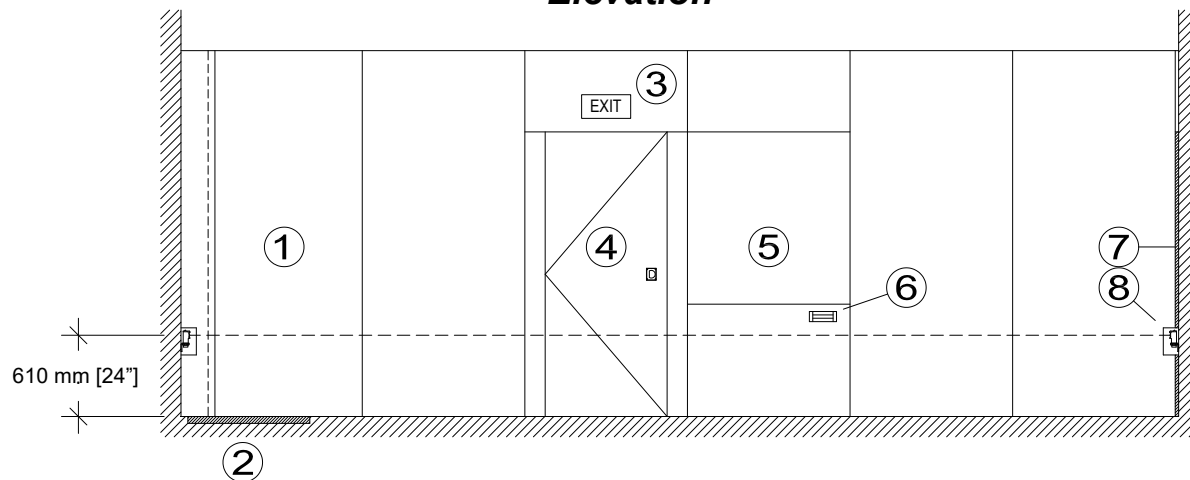
Bulb seal



4

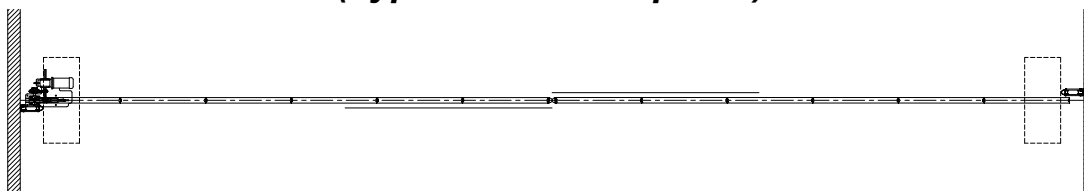
Closure at pocket door (optional)

**Elevation**

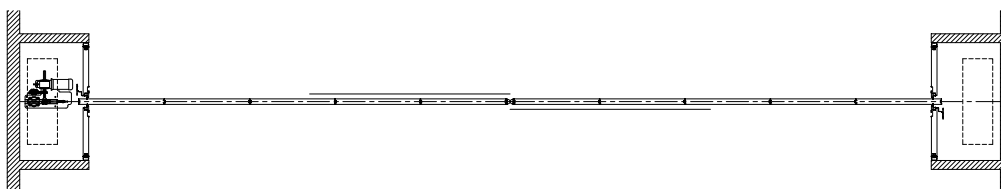


- |                     |                           |
|---------------------|---------------------------|
| 1- Closure panel    | 5- Work surface           |
| 2- Safety mats      | 6- Eraser box             |
| 3- Exit sign        | 7- Safety lead edge       |
| 4- Single pass door | 8- Photo-electric sensors |

**Optional Bi-parting layouts  
(Type FF seals required)**

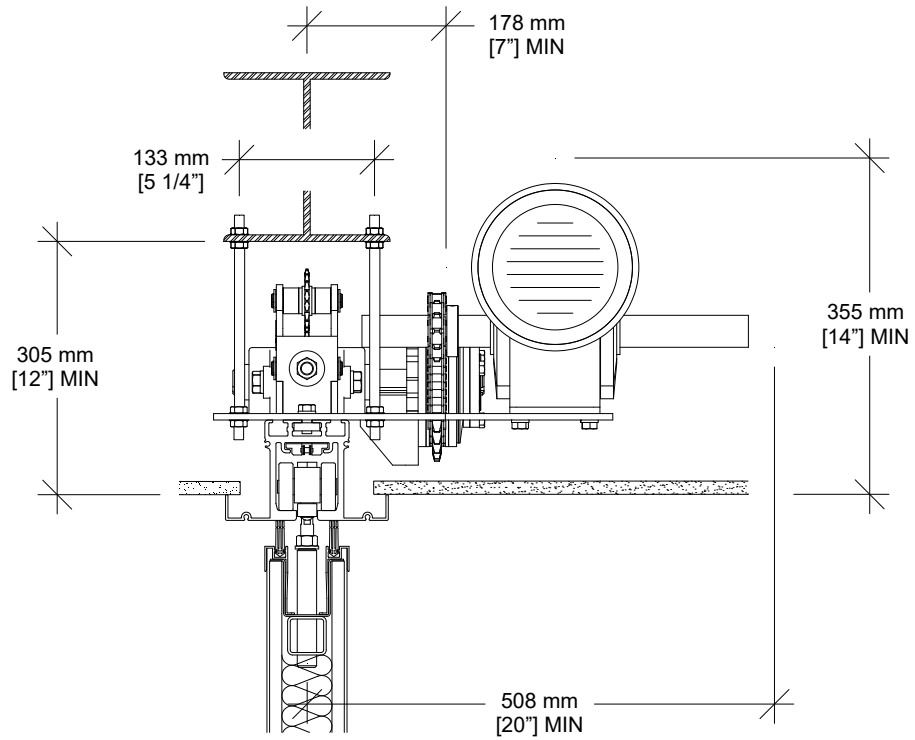


**Wall to wall**



**Pocket to pocket with PA-73 acoustical pocket doors**

### Drive Unit



### Optional Safety Devices

